



9 Firecrest Road, Basingstoke, RG22 5UL

Asking Price £570,000 Freehold

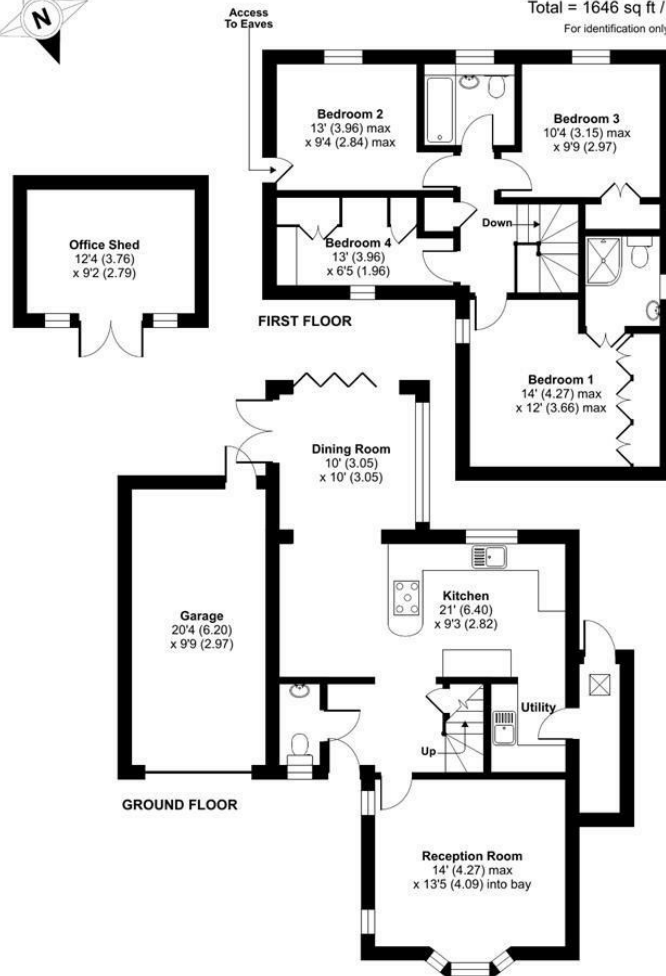


THE PROPERTY
EXPLORER

Floor Plan

Firecrest Road, Basingstoke, RG22

Approximate Area = 1533 sq ft / 142.4 sq m (includes garage)
 Office Shed = 113 sq ft / 10.4 sq m
 Total = 1646 sq ft / 153 sq m
 For identification only - Not to scale



Floor plan produced in accordance with RICS Property Measurement Standards incorporating International Property Measurement Standards (IPMS2 Residential). © n3chem 2023. Produced for Property Explorer, REF: 1031116



These particulars, whilst believed to be accurate are set out as a general outline only for guidance and do not constitute any part of an offer or contract. Intending purchasers should not rely on them as statements of representation of fact, but must satisfy themselves by inspection or otherwise as to their accuracy. No person in this firm's employment has the authority to make or give any representation or warranty in respect of the property.

Arena Business Centre, Suite GF11 The Square, Basing View, Basingstoke, Hampshire, RG21 4EB
 Tel: 01256 321777 Email: hello@thepropertyexplorer.co.uk <https://www.thepropertyexplorer.co.uk>