



Wraysbury

Guide Price **£750,000** *Freehold*

B. S. BENNETT

FANTASTIC OPPORTUNITY. This well-maintained three bedroom detached bungalow is the ideal home for those seeking spacious and versatile living. The bungalow features a large living room with a bay window, an open-plan kitchen with a dining area, shower room, three bedrooms, and one en-suite bathroom. Bedroom 3 could easily be converted into a self-contained studio. There is also further scope for extension, subject to planning permission. The property also benefits from a south-facing rear garden extending approximately 40 m (130 ft), with a decking area. There is extensive parking to the front, with a gravel carriage driveway and an attached garage. Energy Rating: D

Summary

hallway | lounge | kitchen/dining area | 3 bedrooms | en suite bathroom | shower room | 130ft (40m) rear garden | gravel carriage driveway | attached garage | gas central heating

Location:

Wraysbury is a thriving Thameside village with all the amenities that one could ask for including charming country pubs, local post office/convenience store, pharmacy, hardware shop, newsagent, The Kitchen Cafe and Co-op. Wraysbury offers a unique opportunity to those seeking to combine traditional values of a village environment together with the accessibility and convenience of modern day living.

Within a short drive you will find Windsor itself, steeped in history with its Castle and Royal connections. Staines town centre provides an excellent array of shopping facilities, restaurants and cinema. Ideal for commuters with Wraysbury and Sunnymeads stations providing direct links into Windsor and London Waterloo, together with easy access of Motorways M25, M4, M3 and London Heathrow Airport.

Local authority:

Royal Borough of Windsor & Maidenhead, Town Hall, St.Ives Road, Maidenhead, Berkshire, SL6 1RF.

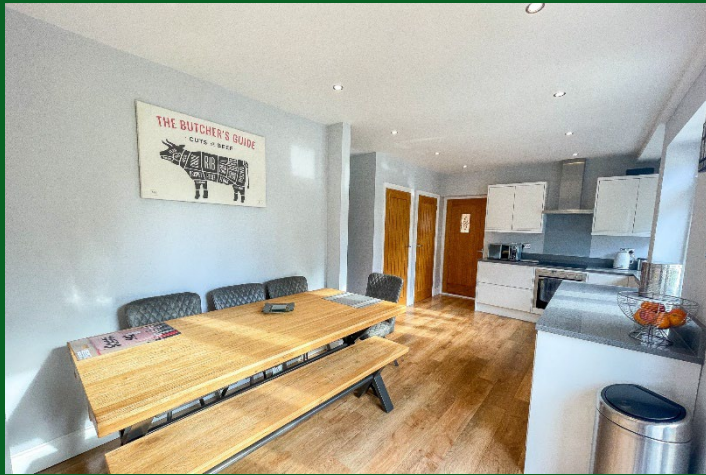
Telephone 01628 798888

Web: www.rbwm.gov.uk

Council Tax Band: F

Payable 2024/25: £2452.57

B. S. BENNETT

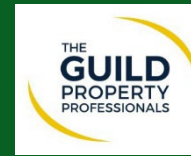


B.S. Bennett Estate Agents

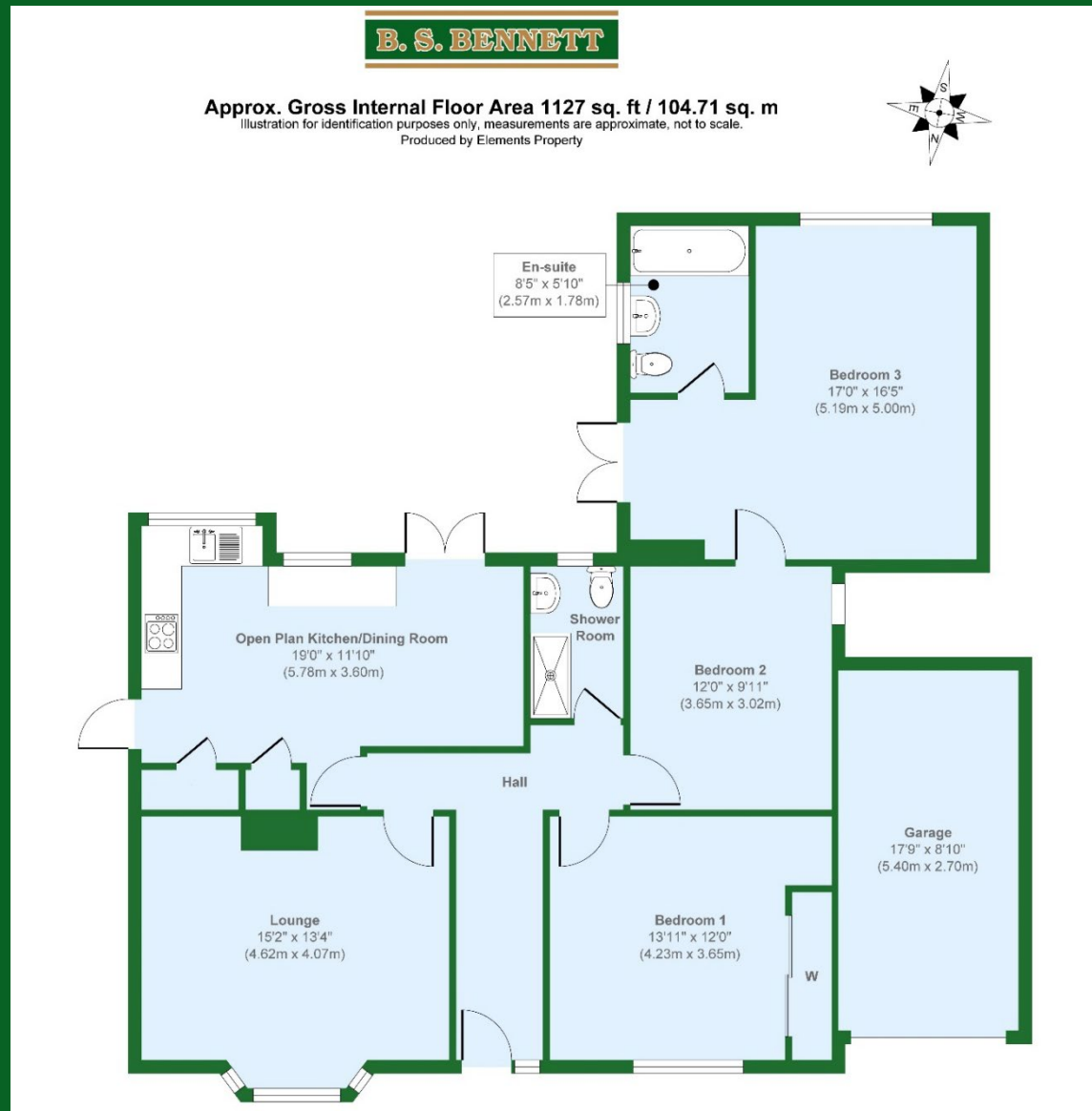
2 Staines Road, Wraysbury, Staines, Middlesex, TW19 5BS

t: 01784 483839 e: post@bsbennett.co.uk

bsbennett.co.uk



B. S. BENNETT



Please Note: We wish to inform prospective purchasers that these sales particulars are set out as a general guide. We have not carried out a detailed survey, or tested the services, appliances and specific fittings. Room sizes are approximate; they are taken between internal wall surfaces and therefore include cupboards/shelves etc. Accordingly, they should not be relied upon for carpets and furnishings. Formal notice is also given that all fixtures and fittings, carpeting, curtains/blinds and kitchen equipment, whether fitted or not, are deemed removable by the seller unless specifically itemised within these particulars. Internal photographs and floor plans are intended as a guide only. Where shown details of the lease, ground rent and service charge have been provided by the seller and their accuracy cannot be guaranteed. Prospective purchasers are advised to obtain verification from their solicitor or surveyor.