



Valley Court, Craig Road
Heaton Mersey, Stockport, SK4 2AW

- Spacious 1st Floor Apartment
- One Double Bedroom
- Fitted Kitchen with Appliances
- Modern Shower Room
- Allocated Parking

Asking Price Of £120,000
EPC Rating C





Property Description

Conveniently situated off Didsbury Road we offer for sale this good sized one bedroom first floor apartment. Well presented throughout this ready to move into property briefly comprises:

Communal entrance, stairs to floor floor, private entrance hall with three storage cupboards, spacious lounge with laminated flooring, kitchen with a range of modern units and fitted appliances, double bedroom with laminated flooring, and modern shower room with white suite. Outside is a communal garden and allocated parking.

No vendor chain - must be viewed

PRIVATE ENTRANCE

Entrance door to hallway, laminated flooring, central heating radiator, doors to three large storage cupboards with shelving. Entry phone system, inset ceiling downlighting, open to lounge, doors to bedroom and shower room



LOUNGE/DINER

15' 0" x 11' 9" (4.57m x 3.58m)

Spacious room with laminated flooring, double glazed window, central heating radiator, door to kitchen

KITCHEN

10' 0" x 7' 0" (3.05m x 2.13m)

Kitchen with a range of modern units comprising: Bowl and a half single drainer stainless steel sink unit with mixer tap, cupboard below, further base, drawer and eye level units, glass fronted display cabinets. Built in electric oven, four ring gas hob with stainless steel chimney style cooker hood over, integrated fridge/freezer, plumbed and access for an automatic washing machine. Wall mounted boiler. Work surfaces with tiled splashbacks, double glazed window to the side elevation



BEDROOM

11' 7" x 10' 0" (3.53m x 3.05m)

Double bedroom, laminated flooring, central heating radiator, double glazed window

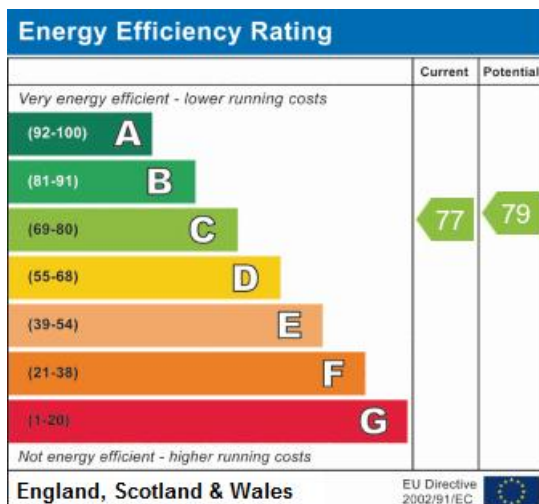
SHOWER ROOM

Attractively presented shower room with modern white suite comprising: shower cubicle with shower, back to wall low level WC with concealed cistern, vanity wash hand basin with cupboard below. Tiled floor, tiled and pvc panelled splashbacks, chrome heated towel radiator, double glazed window with obscure glass. Inset ceiling downlighting

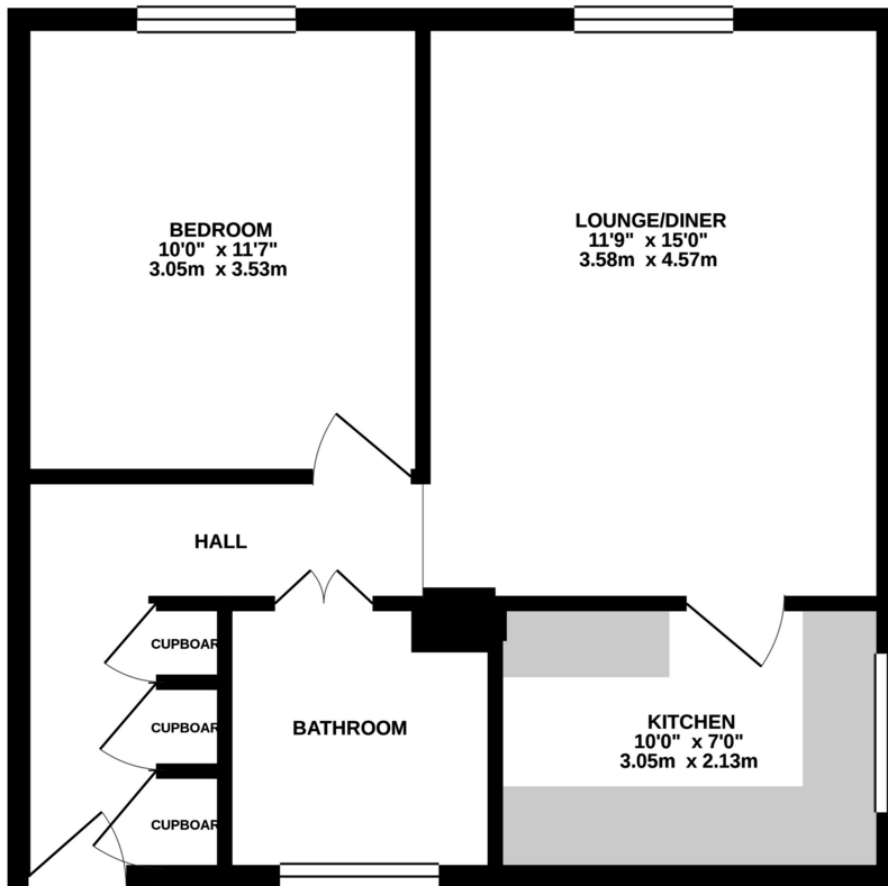


OUTSIDE

Communal garden and allocated parking



GROUND FLOOR
494 sq.ft. (45.9 sq.m.) approx.



TOTAL FLOOR AREA : 494 sq.ft. (45.9 sq.m.) approx.

Whilst every attempt has been made to ensure the accuracy of the floorplan contained here, measurements of doors, windows, rooms and any other items are approximate and no responsibility is taken for any error, omission or mis-statement. This plan is for illustrative purposes only and should be used as such by any prospective purchaser. The services, systems and appliances shown have not been tested and no guarantee as to their operability or efficiency can be given.
Made with Metropix ©2021