

26 Leaside, Heaton Mersey, Stockport, SK4 2DN

£1,595 Per Month

- LARGER THAN AVERAGE 3 BED SEMI-DETACHED
- 3 DOUBLE BEDROOMS
- AMPLE OFF ROAD PARKING
- GARDENS TO FRONT AND REAR
- EASY ACCESS TO M60, M56, A34 METROLINK AND AIRPORT
- QUIET CUL-DE-SAC LOCATION
- CUSTOM MADE 'HAMMOND' WALK-IN WARDROBES
- GAS CENTRAL HEATING
- LOVELY WALKS ON THE DOORSTEP
- UNFURNISHED

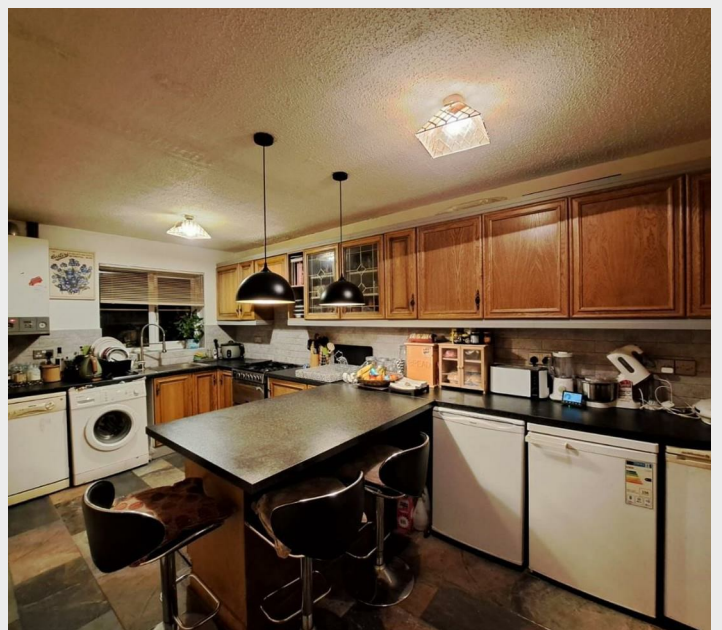
26 Leaside, Stockport SK4 2DN

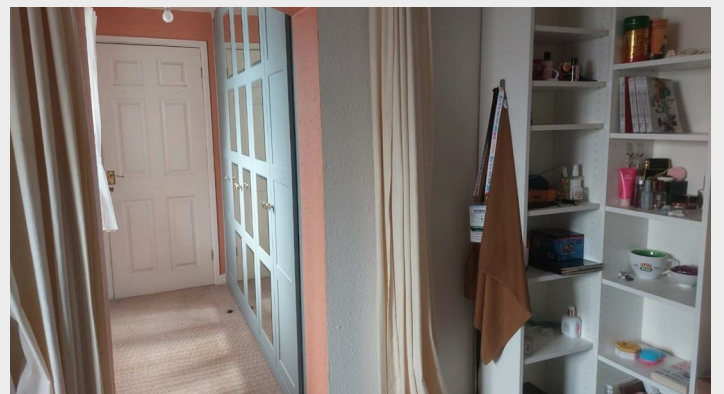
A superb, larger than average three bedroom semi-detached house in a peaceful and tranquil cul-de-sac setting. Downstairs is a delightful open plan arrangement, with lounge open to dining room and conservatory. The fitted kitchen is well proportioned and includes a breakfast bar. There is also the benefit of a downstairs WC. Upstairs there are three double bedrooms, two of which come with custom made 'Hammond' fitted walk-in wardrobes and a top quality and contemporary shower room with walk-in shower. Warmed by gas central heating. Ample off road parking to front, and lawned gardens to front and rear. There are lovely walks on the doorstep along the River Mersey and in Mersey Vale Nature Park. Easy access to the M60 and M56, the A34 and East Didsbury Metrolink, with Manchester Airport also a short journey away, this is leafy but very well connected location.
UNFURNISHED * FURNITURE IN PHOTOS NOT INCLUDED.

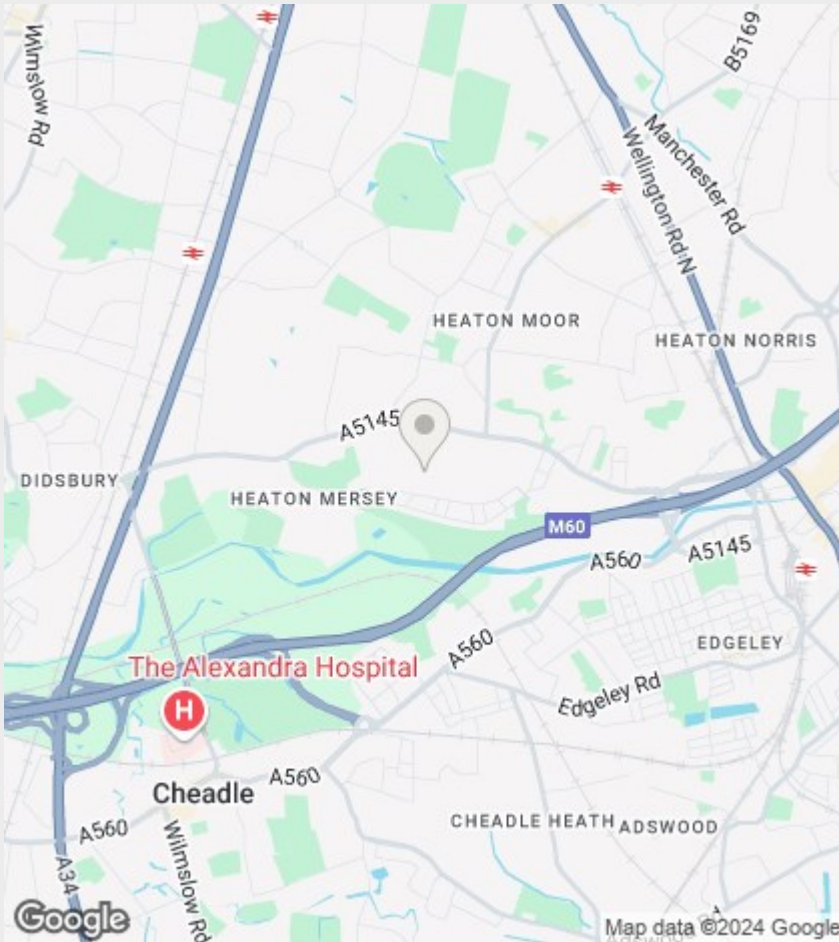


Council Tax Band: C









Directions

Viewings

Viewings by arrangement only. Call 0161 432 0432 to make an appointment.

EPC Rating:

Energy Efficiency Rating		
	Current	Potential
Very energy efficient - lower running costs		
(92 plus) A		
(81-91) B		
(69-80) C		
(55-68) D		
(39-54) E		
(21-38) F		
(1-20) G		
Not energy efficient - higher running costs		
England & Wales	EU Directive 2002/91/EC	