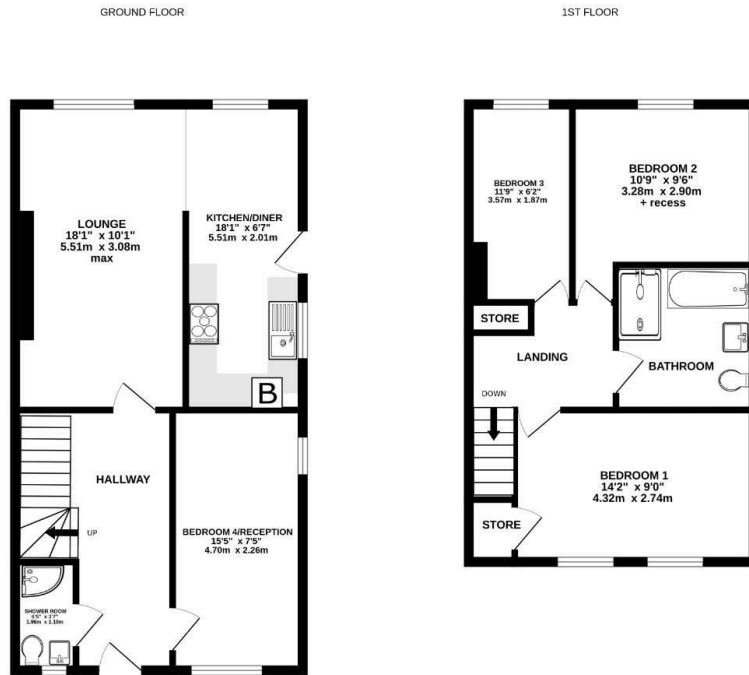




6 Meltham Close, Heaton Mersey, Stockport, SK4 3BD

Offers Over £375,000

- Good Sized Extended 4 Bed Semi Detached
- Modern Fitted Kitchen
- Off Road Parking to the Front
- Converted Garage offering a Multitude of Uses
- Open Lounge/Dining/Kitchen
- No Vendor Chain
- Family 4 Piece Bathroom and G.F Shower Room
- Enclosed Lawned Rear Garden



While every attempt has been made to ensure the accuracy of the floorplan contained herein, measurements of doors, windows, rooms and any other items are approximate and no responsibility is taken for any errors, omissions or misstatements. This plan is for information purposes only and should be used as such by any prospective purchaser. The services, systems and appliances shown have not been tested and no guarantee is given as to their operation or efficiency can be given. Made with: Metreplan 02022



Directions

Viewings

Viewings by arrangement only. Call 0161 432 0432 to make an appointment.

Council Tax Band

C

EPC Rating:

E

Energy Efficiency Rating		Current	Potential
<i>Very energy efficient - lower running costs</i>			
(92 plus)	A		
(81-91)	B		
(69-80)	C		72
(55-68)	D		
(39-54)	E	45	
(21-38)	F		
(1-20)	G		
<i>Not energy efficient - higher running costs</i>			
England & Wales		EU Directive 2002/91/EC	