



5 Dawn Court, Wilbraham Road, Fallowfield, Manchester, M14 6DL

£1,100 PCM

- 2 BED GROUND FLOOR APARTMENT
- MASTER BEDROOM WITH EN-SUITE
- CLOSE TO WILMSLOW ROAD'S SHOPS, BARS, RESTAURANTS
- LARGE LOUNGE/DINING ROOM
- SECURE GATED PARKING

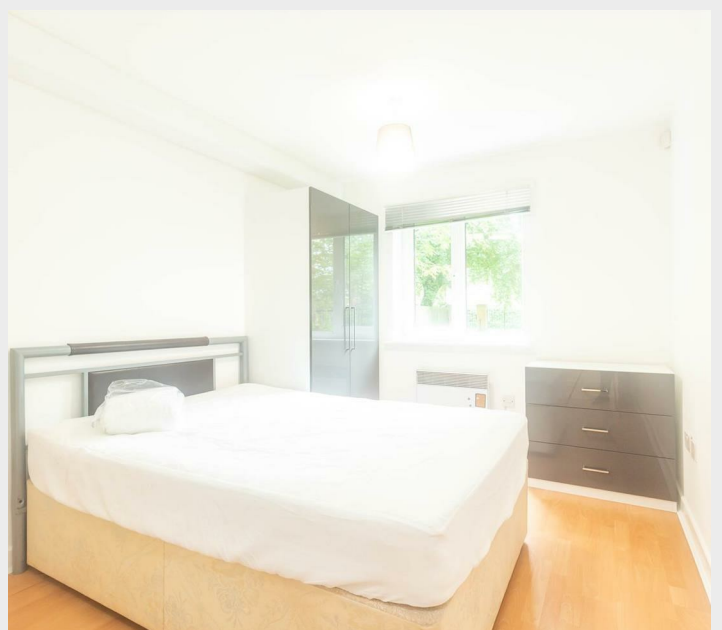
Wilbraham Road, Manchester M14 6DL

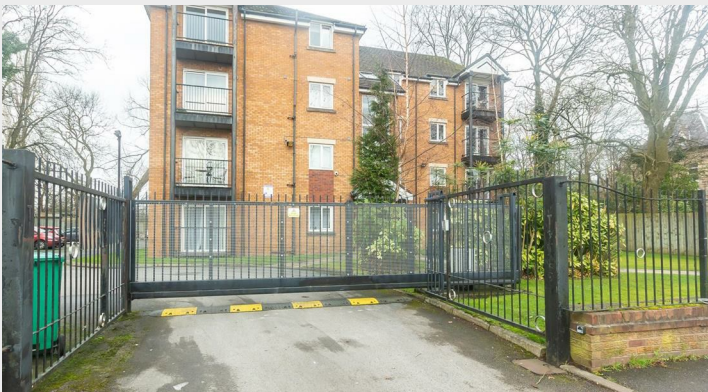
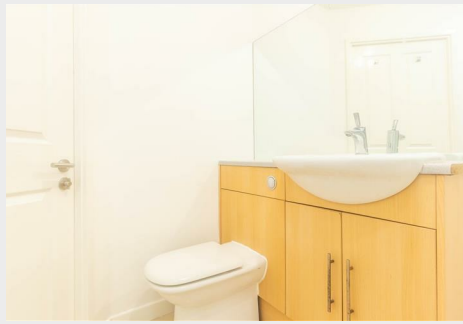
A modern two bed ground floor apartment located in the popular Dawn Court complex, 300m to Wilmslow Road and all its shops, bars, cafes, and bus stops. Large lounge/dining room open to fitted kitchen with appliances. Bathroom with shower. Two generous double bedrooms, plus en-suite to master bedroom. Electric Heating. Private gated parking.

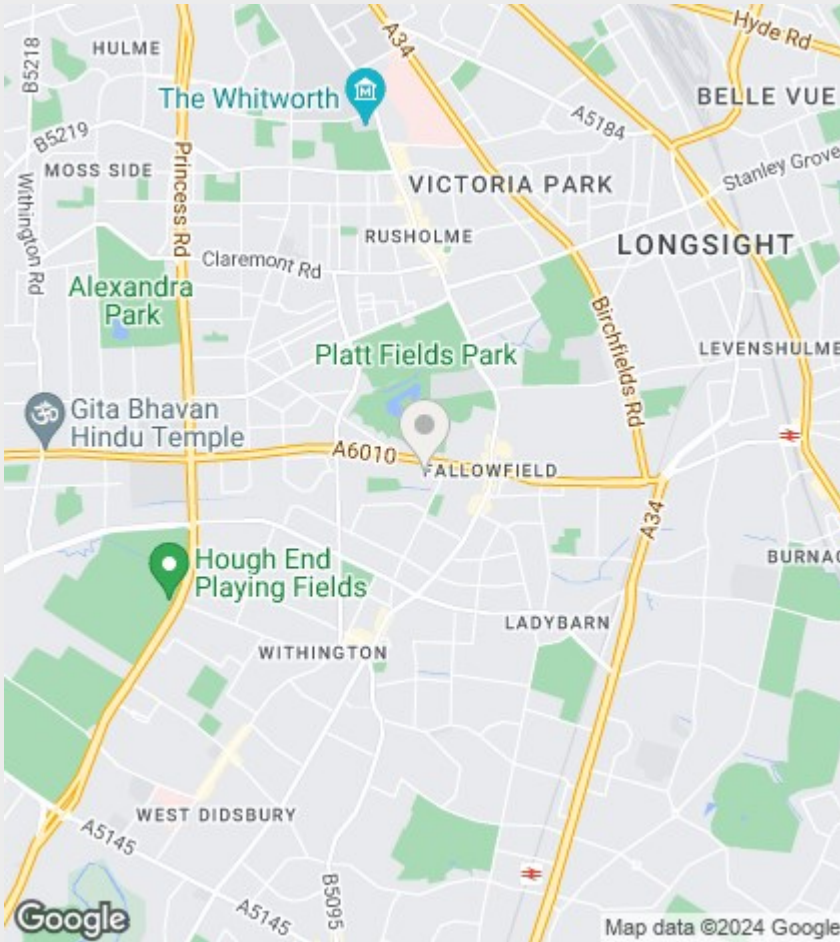


Council Tax Band:









Directions

Viewings

Viewings by arrangement only. Call 0161 432 0432 to make an appointment.

EPC Rating:

Energy Efficiency Rating		
	Current	Potential
<i>Very energy efficient - lower running costs</i>		
(92 plus) A		
(81-91) B		
(69-80) C		
(55-68) D		
(39-54) E		
(21-38) F		
(1-20) G		
<i>Not energy efficient - higher running costs</i>		
England & Wales	EU Directive 2002/91/EC 