



## Chamberlain Fields, Cambridgeshire, CB6 1FJ

**Rent - £1,650 PCM**

**Deposit - £1,903**

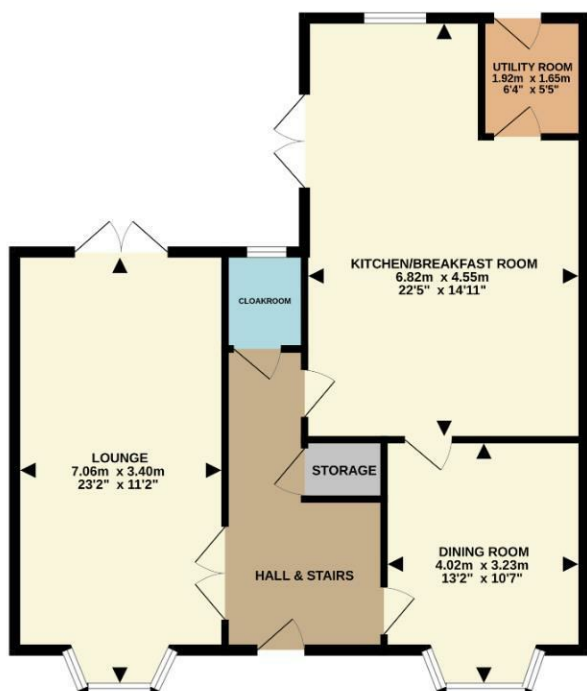
Located at the end of a cul de sac in the popular area of Littleport, is this well proportioned 4 double bedroom detached family home featuring 2 en suites, family bathroom and cloakroom. The house has a generous sized 22'5 x 14'11 kitchen/breakfast room and has a double garage.

Contact us now to book your viewing!

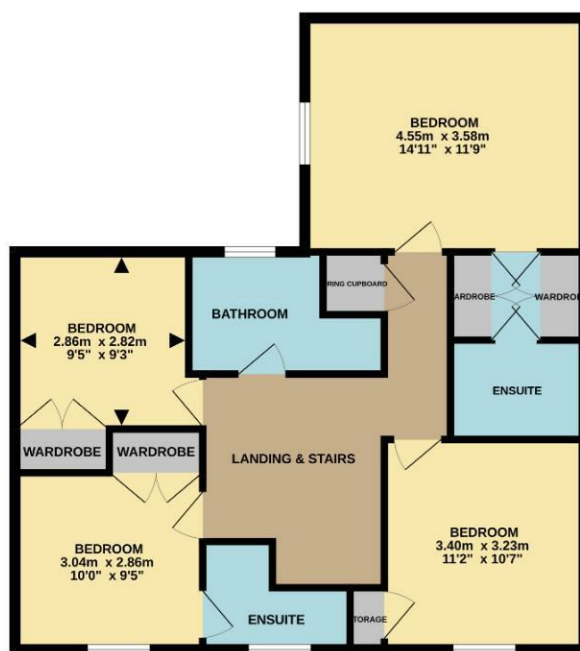
- DETACHED 4 BEDROOM HOUSE
- 4 DOUBLE BEDROOMS
- 2 RECEPTION ROOMS
- UTILITY ROOM
- CUL DE SAC LOCATION
- DOUBLE GARAGE
- 2 EN SUITES, FAMILY BATHROOM AND CLOAKROOM
- LARGE FAMILY KITCHEN BREAKFAST ROOM
- DOUBLE GLAZING AND GAS RADIATOR HEATING THROUGHOUT
- AVAILABLE FROM END APRIL



GROUND FLOOR  
78.3 sq.m. (842 sq.ft.) approx.



1ST FLOOR  
76.4 sq.m. (822 sq.ft.) approx.



TOTAL FLOOR AREA: 154.6 sq.m. (1665 sq.ft.) approx.  
Whilst every attempt has been made to ensure the accuracy of the floorplan contained here, measurements of doors, windows, rooms and any other items are approximate and no responsibility is taken for any error, omission or mis-statement. This plan is for illustrative purposes only and should be used as such by any prospective purchaser. The services, systems and appliances shown have not been tested and no guarantee as to their operability or efficiency can be given.  
Made with Metropix ©2025.

