



## Grosvenor House Court, Bury St. Edmunds, IP28 7DG

Rent - Offers Over £375,000      Deposit -

Welcome to Grosvenor House Court, a stunning property located in the charming town of Mildenhall, Bury St. Edmunds. This fully refurbished 4-bedroom detached home is a true gem waiting to be discovered.

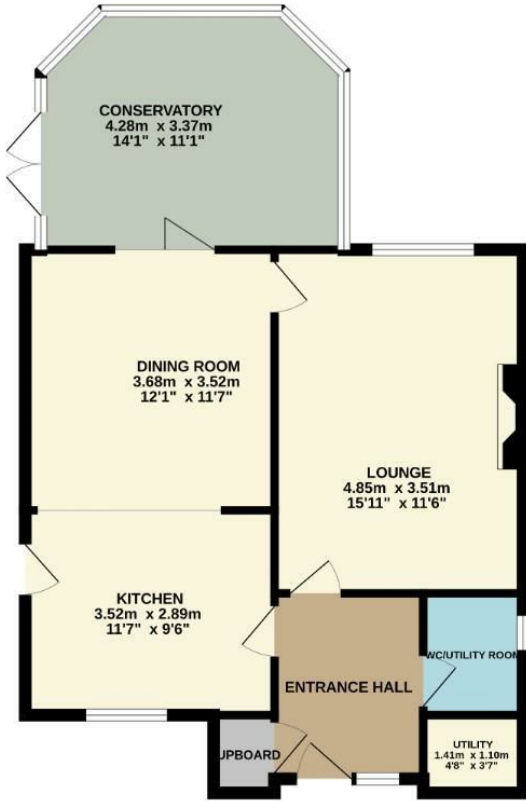
As you step inside, you are greeted by not one, but two spacious reception rooms, perfect for entertaining guests or simply relaxing with your loved ones. The property boasts 4 well-appointed bedrooms, offering ample space for the whole family to unwind and recharge.

- DETACHED 4 BEDROOM FAMILY HOME
- FITTED KITCHEN/DINER
- WELL APPOINTED LOUNGE
- FAMILY BATHROOM
- PARKING TO THE FRONT
- LARGE LANDSCAPED GARDENS WITH OUTBUILDINGS
- UTILITY ROOM/WC
- EN SUITE TO MAIN BEDROOM
- STORAGE WITHIN GARAGE WITH WORK FORM HOME SPACE
- CUL DE SAC LOCATION

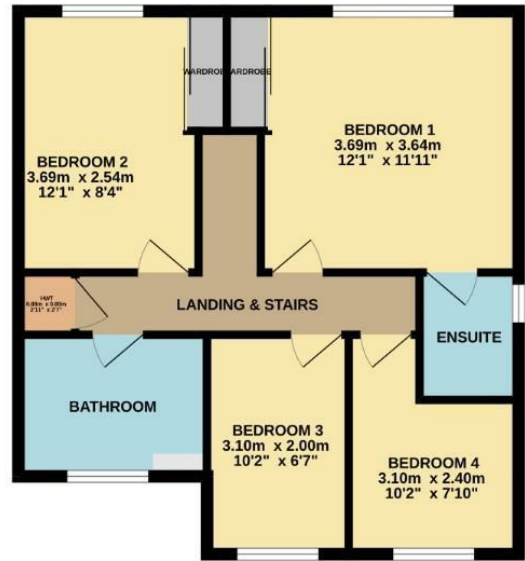


Council Tax Band: - EPC Rating: null

GROUND FLOOR  
63.8 sq.m. (687 sq.ft.) approx.



1ST FLOOR  
51.2 sq.m. (551 sq.ft.) approx.



TOTAL FLOOR AREA: 115.1 sq.m. (1239 sq.ft.) approx.

Whilst every attempt has been made to ensure the accuracy of the floorplan contained here, measurements of doors, windows, rooms and any other items are approximate and no responsibility is taken for any error, omission or mis-statement. This plan is for illustrative purposes only and should be used as such by any prospective purchaser. The services, systems and appliances shown have not been tested and no guarantee as to their operability or efficiency can be given.  
Made with Metropix ©2024

