



Cemetery Road, Lakenheath, Suffolk, IP27 9DY

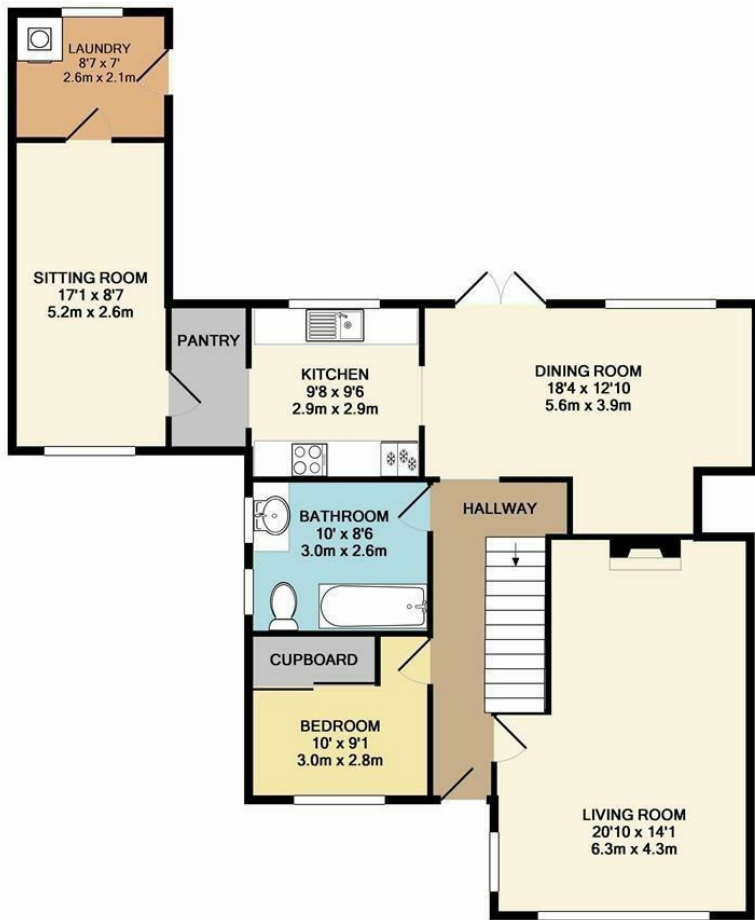
Rent - £1,125 PCM Deposit - £1,298

This 3 bedroom detached chalet bungalow in Lakenheath village, just minutes from local RAF bases. The property offers a spacious lounge, kitchen, dining room, a separate sitting room, laundry room and 2 bathrooms. Outside there are gardens to the front and rear of the property and off road parking.

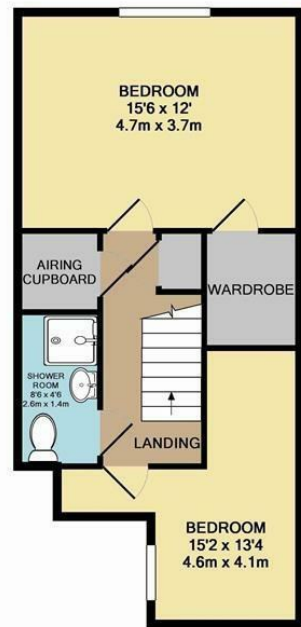
- DETACHED CHALET BUNGALOW
- 3 GOOD SIZED BEDROOMS
- DINING ROOM
- FAMILY BATHROOM & SHOWER ROOM
- GARDENS & OFF ROAD PARKING
- CLOSE TO RAF BASES
- OIL HEATING & ENERGY RATING - E
- APPROXIMATE SIZE - 1546 SQ FT
- SORRY NO PETS / COUNCIL TAX BAND -D
- AVAILABLE AT THE END OF JULY



Council Tax Band: D - EPC Rating: E 46



GROUND FLOOR
APPROX. FLOOR
AREA 1075 SQ.FT.
(99.9 SQ.M.)



1ST FLOOR
APPROX. FLOOR
AREA 471 SQ.FT.
(43.8 SQ.M.)

TOTAL APPROX. FLOOR AREA 1546 SQ.FT. (143.6 SQ.M.)

Whilst every attempt has been made to ensure the accuracy of the floor plan contained here, measurements of doors, windows, rooms and any other items are approximate and no responsibility is taken for any error, omission, or mis-statement. This plan is for illustrative purposes only and should be used as such by any prospective purchaser. The services, systems and appliances shown have not been tested and no guarantee as to their operability or efficiency can be given.
Made with Metropix ©2012

