



Sycamore Covert, Thetford, IP24 2UJ

Rent - Offers In The Region Of £350,000

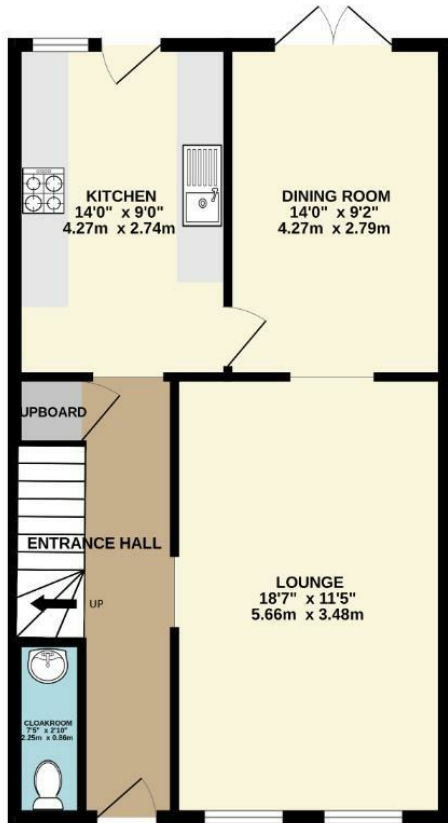
Deposit -

Shires Residential sales are delighted to offer for sale this detached four bedroom home in a tucked away cul de sac setting fronting woodland. The market town of Thetford offers good road links via the A11. Thetford benefits from good amenities and facilities for every day living with the benefit of Thetford Forest nearby for recreational enjoyment.

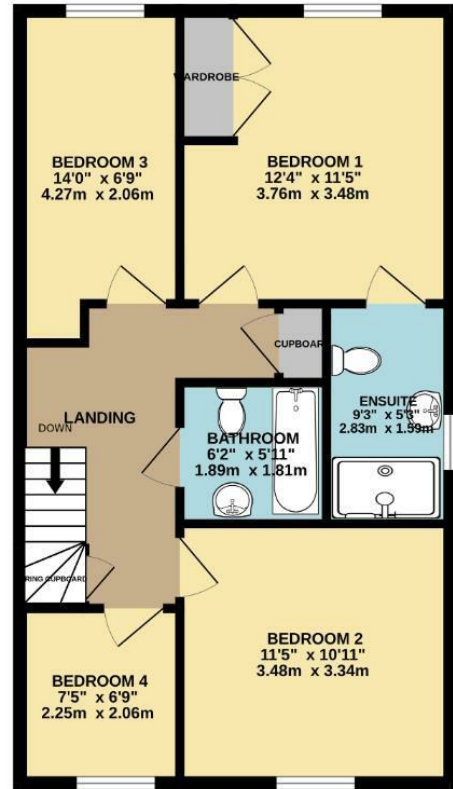
- SOUGHT AFTER LOCATION
- FOUR BEDROOMS
- SEPARATE DINING ROOM
- GARAGE & DRIVEWAY
- CLOSE TO WOODLAND
- DETACHED HOUSE
- SPACIOUS KITCHEN
- FAMILY BATHROOM & EN SUITE
- ENCLOSED REAR GARDEN



GROUND FLOOR
592 sq.ft. (55.0 sq.m.) approx.



1ST FLOOR
592 sq.ft. (55.0 sq.m.) approx.



TOTAL FLOOR AREA: 1184 sq.ft. (110.0 sq.m.) approx.

Whilst every attempt has been made to ensure the accuracy of the floorplan contained here, measurements of doors, windows, rooms and any other items are approximate and no responsibility is taken for any error, omission or mis-statement. This plan is for illustrative purposes only and should be used as such by any prospective purchaser. The services, systems and appliances shown have not been tested and no guarantee as to their operability or efficiency can be given.
Made with Metreplex 5/2023.

