



## Malts Lane, Thetford, IP26 4LA

**Rent - £1,300      Deposit - £1,500**

SHIRES is delighted to present this delightful detached bungalow on Malts Lane which offers a perfect blend of comfort and convenience. This property boasts three well-proportioned bedrooms, making it an ideal home for families or those seeking extra space.

The bungalow features two reception rooms, allowing for versatile use of space, whether it be for a formal dining area or a cosy study.

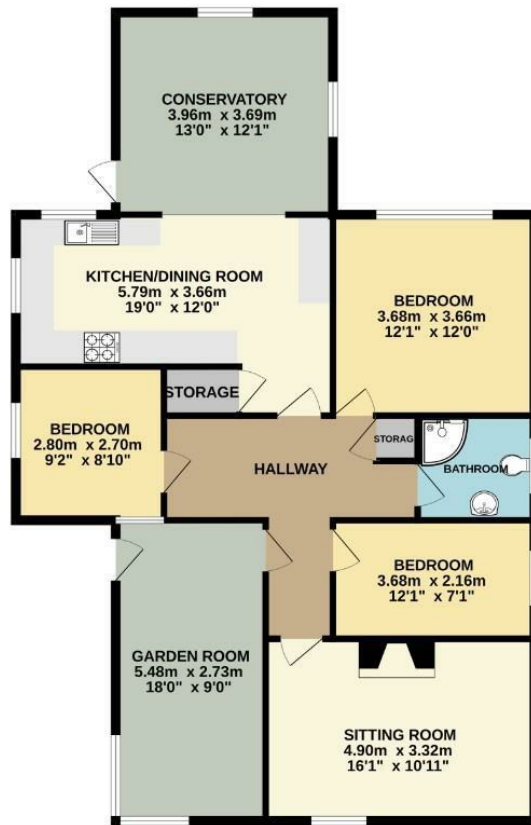
- SPACIOUS 3 BED BUNGALOW
- HALL/KITCHEN/DINING ROOM
- BEAUTIFULLY PRESENTED GARDEN
- VILLAGE LOCATION
- PLEASE CALL IN TO BOOK A VIEWING
- GARDEN ROOM/CONSERVATORY/LIVING ROOM
- 2 SINGLE BEDROOMS WITH A LARGE MAIN BEDROOM
- SINGLE GARAGE WITH LOTS OF PARKING
- AVAILABLE LATE JAN/EARLY FEB
- PERFECT FOR USAF MEMBERS



Council Tax Band: C - EPC Rating: D 55



# GROUND FLOOR



Whilst every attempt has been made to ensure the accuracy of the floorplan contained here, measurements of doors, windows, rooms and any other items are approximate and no responsibility is taken for any error, omission or misstatement. This plan is for illustrative purposes only and should be used as such by any prospective purchaser. The services, systems and appliances shown have not been tested and no guarantee as to their operability or efficiency can be given.  
Made with Miroplan ©2025

