



Lime Close, Mildenhall, Suffolk, IP28 7PR

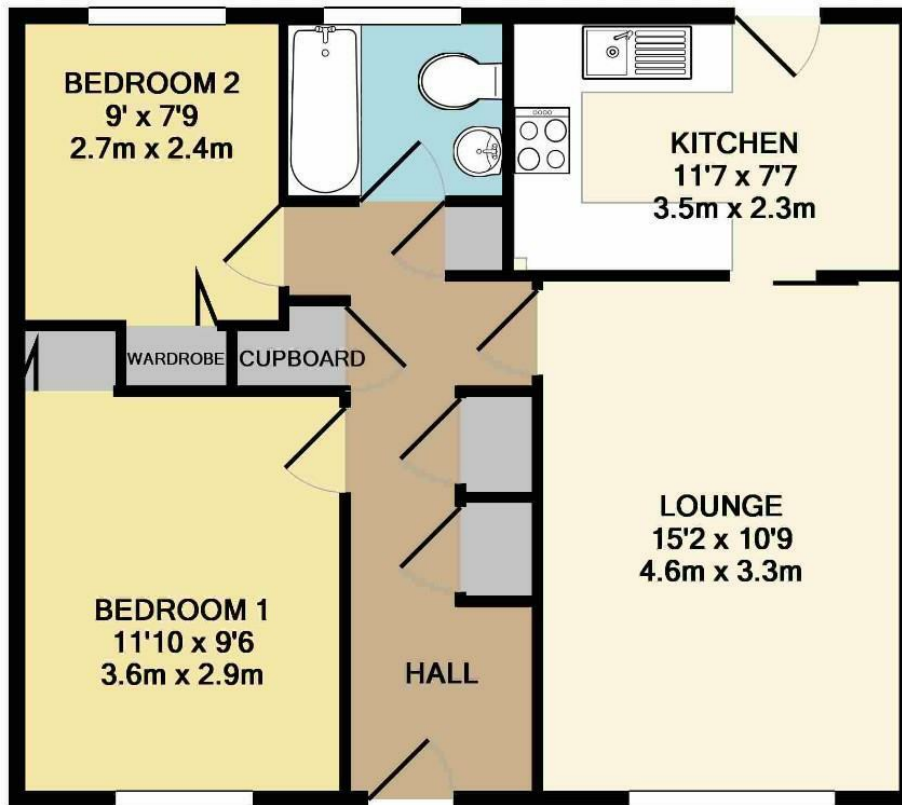
Rent - £1,150 PCM Deposit - £1,326

This semi-detached bungalow is located close to RAF bases. The property comprises of 2 good size bedrooms, a spacious lounge, family bathroom & kitchen. There is an enclosed garden to the rear of the property with a storage shed & nearby parking.

- SEMI DETACHED BUNGALOW
- 2 BEDROOMS
- SPACIOUS LOUNGE
- FAMILY BATHROOM
- GARDEN, STORAGE SPACE & NEARBY PARKING
- CLOSE TO RAF BASES
- MODERN ELECTRIC HEATING & ENERGY RATING - D
- APPROXIMATE SIZE - 587 SQ FT
- PETS CONSIDERED
- AVAILABLE FROM MID FEBRUARY 2024



Council Tax Band: - EPC Rating: E 44



TOTAL APPROX. FLOOR AREA 587 SQ.FT. (54.5 SQ.M.)

Whilst every attempt has been made to ensure the accuracy of the floor plan contained here, measurements of doors, windows, rooms and any other items are approximate and no responsibility is taken for any error, omission, or mis-statement. This plan is for illustrative purposes only and should be used as such by any prospective purchaser. The services, systems and appliances shown have not been tested and no guarantee as to their operability or efficiency can be given
Made with Metropix ©2012

