



Woodcutters Way, Brandon, IP27 9JQ

Rent - £1,250 PCM

Deposit - £1,442

Available to let, this detached two-bedroom bungalow offers comfortable single-storey living and is ideally located with excellent access to RAF Lakenheath.

The accommodation comprises two well-proportioned bedrooms, a bathroom, and a practical living layout suited to a range of tenants. Externally, the property benefits from a private driveway providing off-road parking.

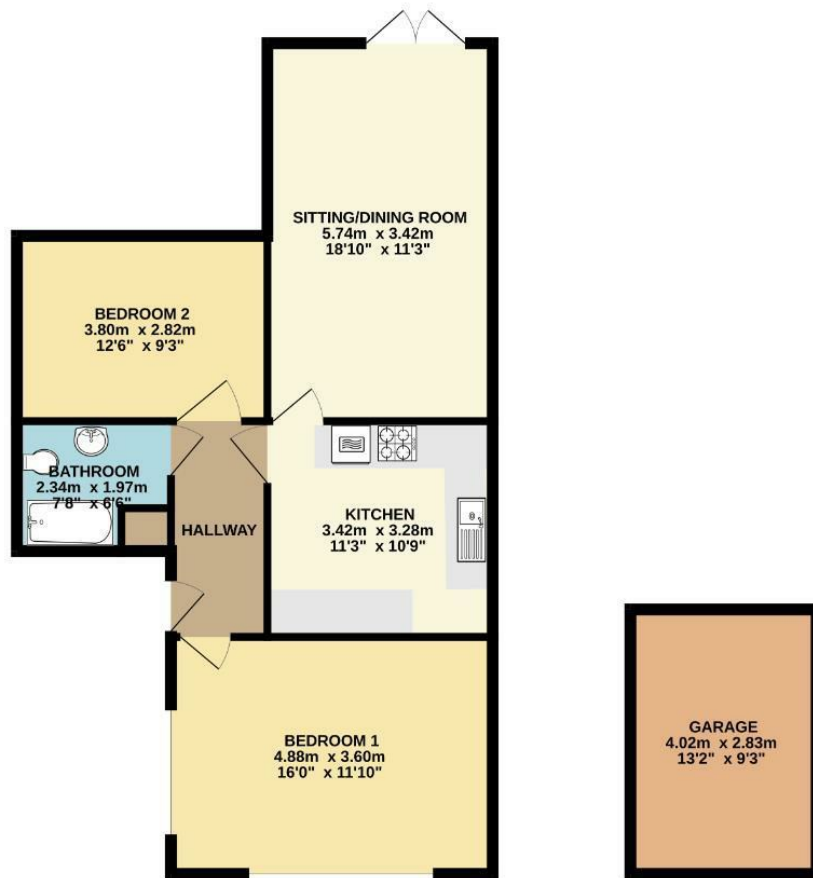
Situated in a convenient location close to local amenities and major transport links, this bungalow is an ideal choice for those seeking easy access to RAF Lakenheath while enjoying the benefits of a detached home.

- DETACHED BUNGALOW
- DRIVEWAY
- GREAT LOCATION TO AMENITIES
- AVAILABLE NOW
- TWO BEDROOMS
- GARAGE
- CLOSE TO RAFL & RAFM
- CALL SHIRES TO VIEW!



Council Tax Band: B - EPC Rating: E 54

GROUND FLOOR
72.0 sq.m. (775 sq.ft.) approx.



TOTAL FLOOR AREA: 72.0 sq.m. (775 sq.ft.) approx.

Whilst every attempt has been made to ensure the accuracy of the floorplan contained here, measurements of doors, windows, rooms and any other items are approximate and no responsibility is taken for any error, omission or misstatement. This plan is for illustrative purposes only and should be used as such by any prospective purchaser. The services, systems and appliances shown have not been tested and no guarantee as to their operability or efficiency can be given.
Made with Metropix 4.0.0.0.

