

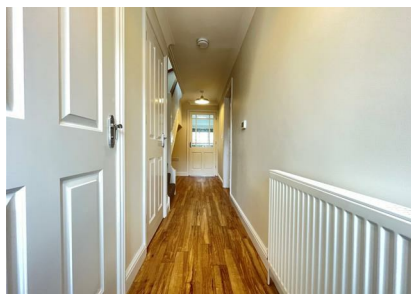


## Pound Meadow Court, Mildenhall, Suffolk, IP28 7GY

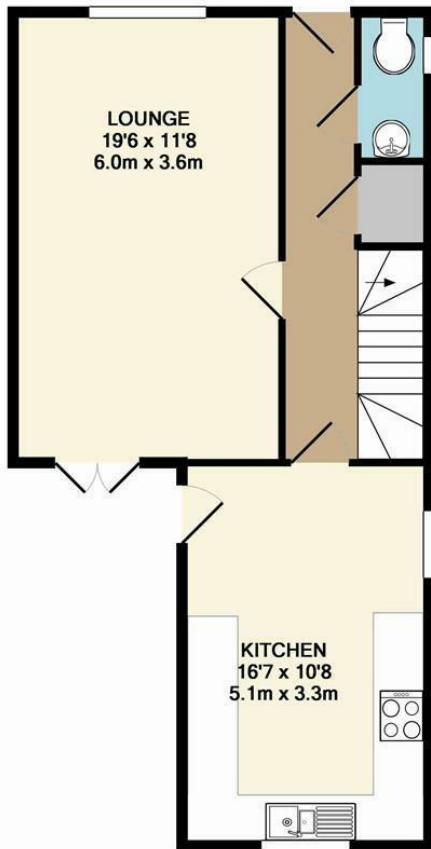
Rent - £1,450 PCM      Deposit - £1,673

This modern home offers excellent family accommodation within walking distance of the town centre. 3 bedrooms - all with closets, modern kitchen/diner & two luxury bathrooms. Garage, parking & an enclosed garden.

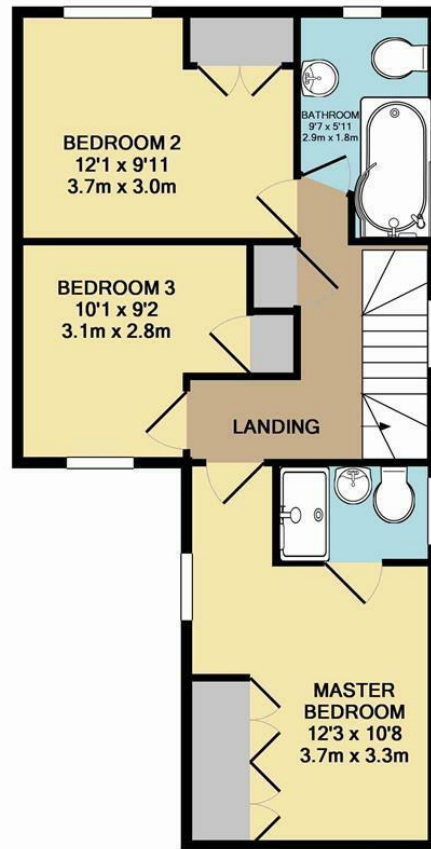
- MODERN FAMILY HOME
- 3 BEDROOMS WITH CLOSETS
- SPACIOUS LOUNGE
- FAMILY BATHROOM, ENSUITE & A CLOAKROOM
- ENCLOSED GARDEN, PARKING & GARAGE
- CLOSE TO THE TOWN CENTRE & RAF BASES
- GAS HEATING & ENERGY RATING - C
- APPROXIMATE SIZE - 1058 SQ FT
- SORRY NO PETS
- AVAILABLE IMMEDIATELY



Council Tax Band: C - EPC Rating: C 79



GROUND FLOOR  
APPROX. FLOOR  
AREA 529 SQ.FT.  
(49.2 SQ.M.)



1ST FLOOR  
APPROX. FLOOR  
AREA 529 SQ.FT.  
(49.2 SQ.M.)

TOTAL APPROX. FLOOR AREA 1058 SQ.FT. (98.3 SQ.M.)

Whilst every attempt has been made to ensure the accuracy of the floor plan contained here, measurements of doors, windows, rooms and any other items are approximate and no responsibility is taken for any error, omission, or mis-statement. This plan is for illustrative purposes only and should be used as such by any prospective purchaser. The services, systems and appliances shown have not been tested and no guarantee as to their operability or efficiency can be given  
Made with Metropix ©2013

