

4 New Street, Mildenhall, Suffolk, IP28 7EN
Tel: 01638 712132
mildenhall@shiresestateagents.co.uk
www.shiresresidential.com

shires

Estate & Letting Agents



Kingsway, Mildenhall, Suffolk, IP28 7HR

Rent - £1,850 PCM

Deposit - £2,134

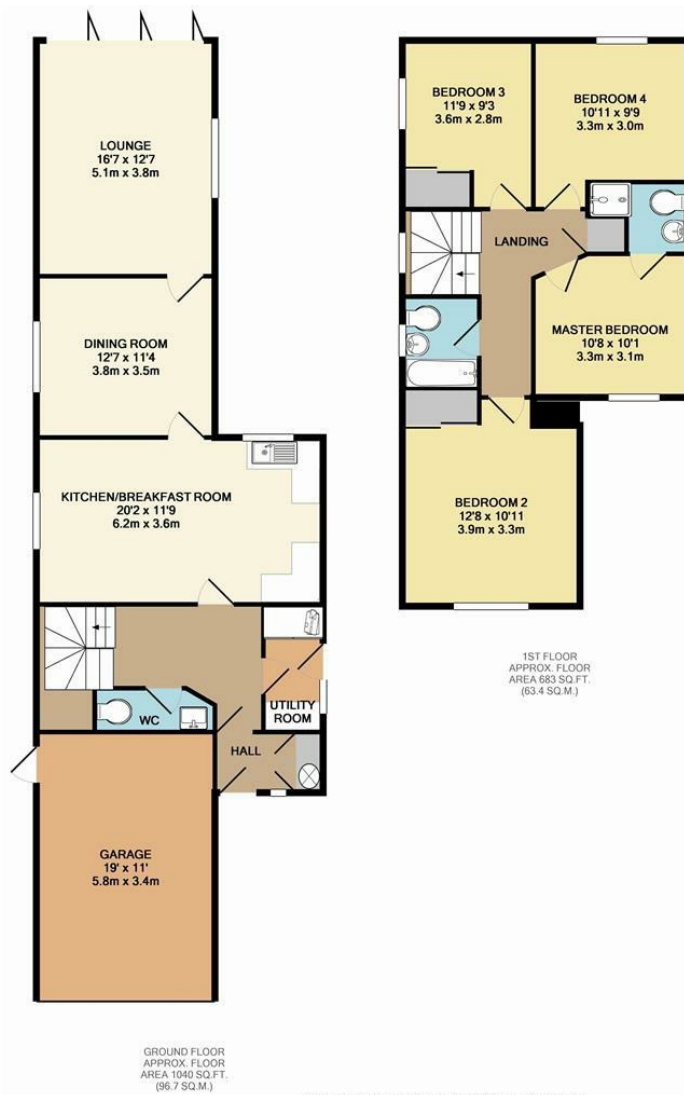
This spacious four-bedroom detached family home is ideally located just a short walk from the town centre, offering excellent access to local shops, schools, and amenities. The property is also conveniently situated within easy reach of both RAF Mildenhall and RAF Lakenheath, making it an ideal choice for military personnel.

Inside, the home boasts a large kitchen/breakfast room finished to a high standard, perfect for everyday living and entertaining. Additional ground floor accommodation includes a separate dining room, a generous lounge, and a

- SPACIOUS DETACHED HOUSE
- 4 BEDROOMS
- SEPARATE DINING ROOM
- FAMILY BATHROOM, EN SUITE & CLOAKROOM
- LARGE GARDEN
- CLOSE TO THE TOWN CENTRE
- GAS HEATING & ENERGY RATING - B
- APPROXIMATE SIZE - 1723 SQ FT.
- PETS CONSIDERED
- GARAGE & DRIVEWAY PARKING



Council Tax Band: D - EPC Rating: C 74



Whilst every attempt has been made to ensure the accuracy of the floor plan contained here, measurements of doors, windows, rooms and any other items are approximate and no responsibility is taken for any error, omission, or mis-statement. This plan is for illustrative purposes only and should be used as such by any prospective purchaser. The services, systems and appliances shown have not been tested and no guarantee as to their operability or efficiency can be given.
Made with Metropix ©2014

