



The Street, Eriswell, IP27 9BH

Rent - £1,280 PCM

Deposit - £1,476

Charming 2-Bedroom Semi-Detached Flint Cottage – Eriswell Village, Near RAF Lakenheath

Available soon is this delightful 2-bedroom semi-detached flint cottage, located in the picturesque village of Eriswell, just a short distance from RAF Lakenheath. Full of character and charm, the property offers a warm and inviting living space, perfect for professionals, couples or small families.

The accommodation includes a cosy living room, a separate dining room or study, a modern, well-equipped kitchen, and a stylish bathroom. Upstairs, you'll find two good-sized bedrooms, each filled with natural light.

Outside, the cottage boasts a generous enclosed garden, perfect for outdoor entertaining or relaxing, along with a storage shed and off-road parking.

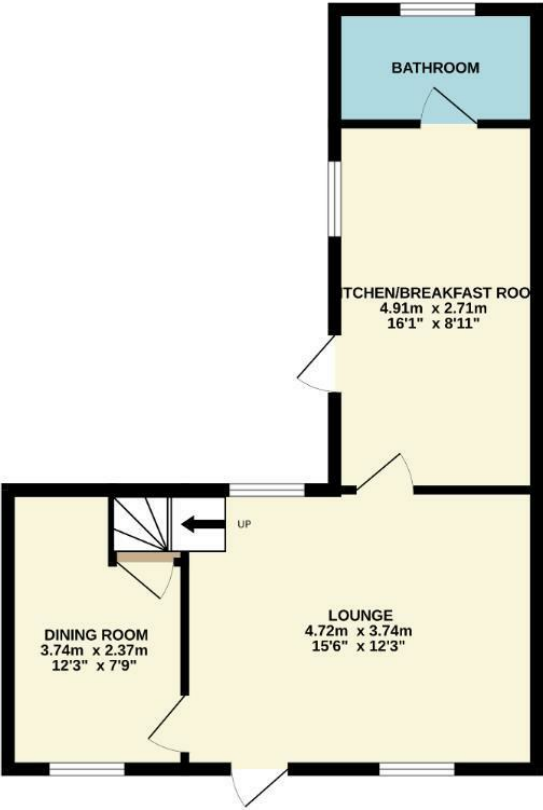
A wonderful blend of character features and modern convenience in a peaceful village setting – early viewing is highly recommended.

- CHARMING SEMI-DETACHED FLINT COTTAGE
- COSY BEDROOMS
- MODERN, WELL-EQUIPPED KITCHEN
- GENEROUS ENCLOSED GARDEN
- VILLAGE LOCATION NEAR RAF LAKENHEATH
- TWO BEDROOMS
- SEPARATE DINING ROOM OR STUDY
- STYLISH BATHROOM
- OFF ROAD PARKING
- AVAILABLE NOW!



Council Tax Band: B - EPC Rating: E 48

GROUND FLOOR
43.9 sq.m. (473 sq.ft.) approx.



1ST FLOOR
26.9 sq.m. (289 sq.ft.) approx.



TOTAL FLOOR AREA: 70.8 sq.m. (762 sq.ft.) approx.
Whilst every attempt has been made to ensure the accuracy of the floorplan contained here, measurements of doors, windows, rooms and any other items are approximate and no responsibility is taken for any error, omission or mis-statement. This plan is for illustrative purposes only and should be used as such by any prospective purchaser. The services, systems and appliances shown have not been tested and no guarantee as to their operability or efficiency can be given.
Made with Metropix ©2025

