



## Bridge Farm Close, Mildenhall, Suffolk, IP28 7FF

Rent - £2,100 PCM

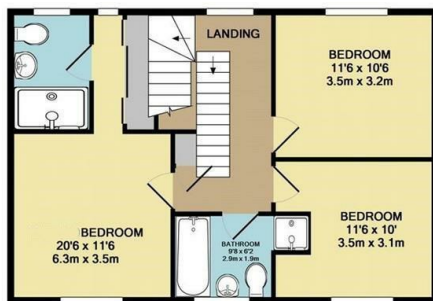
Deposit - £2,423

This large terraced house is situated on the edge of town within easy reach of the military bases and offers excellent family accommodation spread over 3 floors. There are 5 good size bedrooms with 3 bathrooms. The house has a large kitchen/breakfast room with a further dining room and lounge on the ground floor. Its an ideal family home.

- LARGE TERRACED HOME
- 5 GOOD SIZE BEDROOMS
- ENCLOSED GARDEN
- 2 FAMILY BATHROOMS, ENSUITE & CLOAKROOM
- PARKING
- CLOSE TO THE TOWN CENTRE
- GAS HEATING & ENERGY RATING - C
- APPROXIMATE SIZE - 1863 SQ FT
- PETS CONSIDERED / COUNCIL TAX BAND - E
- AVAILABLE AT THE BEGINNING OF JUNE



Council Tax Band: E - EPC Rating: C 79



TOTAL APPROX. FLOOR AREA 1683 SQ.FT. (156.3 SQ.M.)

Whilst every attempt has been made to ensure the accuracy of the floor plan contained here, measurements of doors, windows, rooms and any other items are approximate and no responsibility is taken for any error, omission, or mis-statement. This plan is for illustrative purposes only and should be used as such by any prospective purchaser. The services, systems and appliances shown have not been tested and no guarantee as to their operability or efficiency can be given.

Made with Metropix ©2012.

