



Roebuck Drive, Lakenheath, IP27 9DF

Rent - Guide Price £180,000 Deposit -

This one bedroom bungalow presents an excellent opportunity for first-time buyers, downsizers, or anyone looking for a low-maintenance home in a desirable location. With its combination of comfort, convenience, and scenic surroundings, this bungalow is sure to appeal to a wide range of potential residents. Do not miss the chance to make this delightful property your new home.

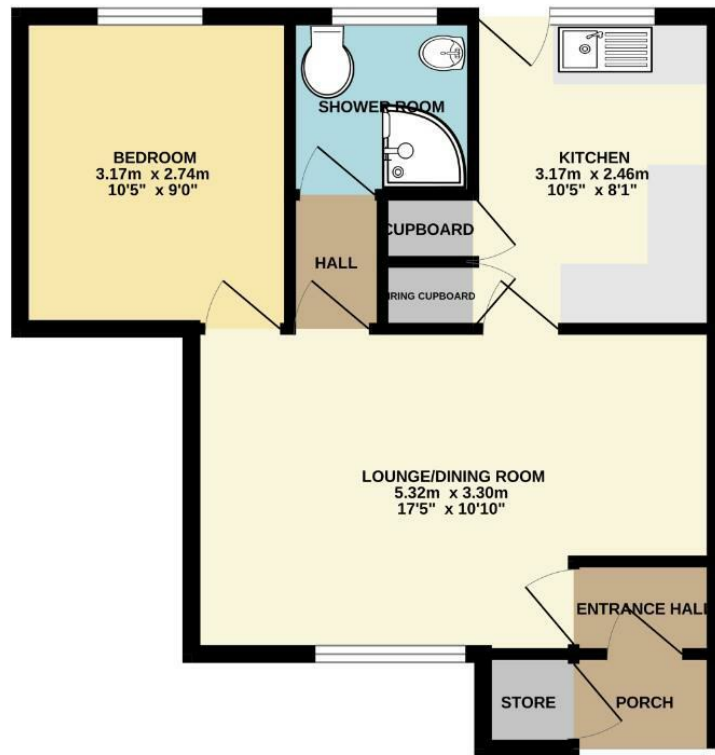
Nestled in the tranquil cul-de-sac of Roebuck Drive, Lakenheath, this charming one-bedroom bungalow offers a delightful retreat from the hustle and bustle of everyday life. Spanning an inviting 527 square feet, the property

- ONE BEDROOM
- OFF ROAD PARKING
- LOUNGE/ DINER
- IDEAL FIRST TIME BUYER
- IDEAL TO DOWNSIZE TO
- FIELDS BEHIND
- QUIET CUL DE SAC
- FITTED KITCHEN
- LAKENHEATH VILLAGE



Council Tax Band: A - EPC Rating: E 43

GROUND FLOOR
42.2 sq.m. (454 sq.ft.) approx.



TOTAL FLOOR AREA: 42.2 sq.m. (454 sq.ft.) approx.

Whilst every attempt has been made to ensure the accuracy of the floorplan contained here, measurements of doors, windows, rooms and any other items are approximate and no responsibility is taken for any error, omission or misstatement. This plan is for illustrative purposes only and should be used as such by any prospective purchaser. The services, systems and appliances shown have not been tested and no guarantee as to their operability or efficiency can be given.
Made with Metropix C0025

