



## East Fen Drove, Soham, CB7 5JL

Rent - £1,500

Deposit - £1,730

Located in the semi-rural area of East Fen Drove, Soham, this charming THREE DOUBLE bedroom semi-detached bungalow HAS BEEN NEWLY RENOVATED INCLUDING BRAND NEW KITCHEN. Embrace a serene lifestyle while still being within reach of local conveniences.

The property homes a large living room, kitchen diner, three double bedrooms all with fitted wardrobes and a family bathroom. The property has been thoughtfully designed to meet the needs of contemporary living.

Outside boasts a generous garden, providing a tranquil outdoor space. Additionally, the property includes a driveway with parking for up to four vehicles.

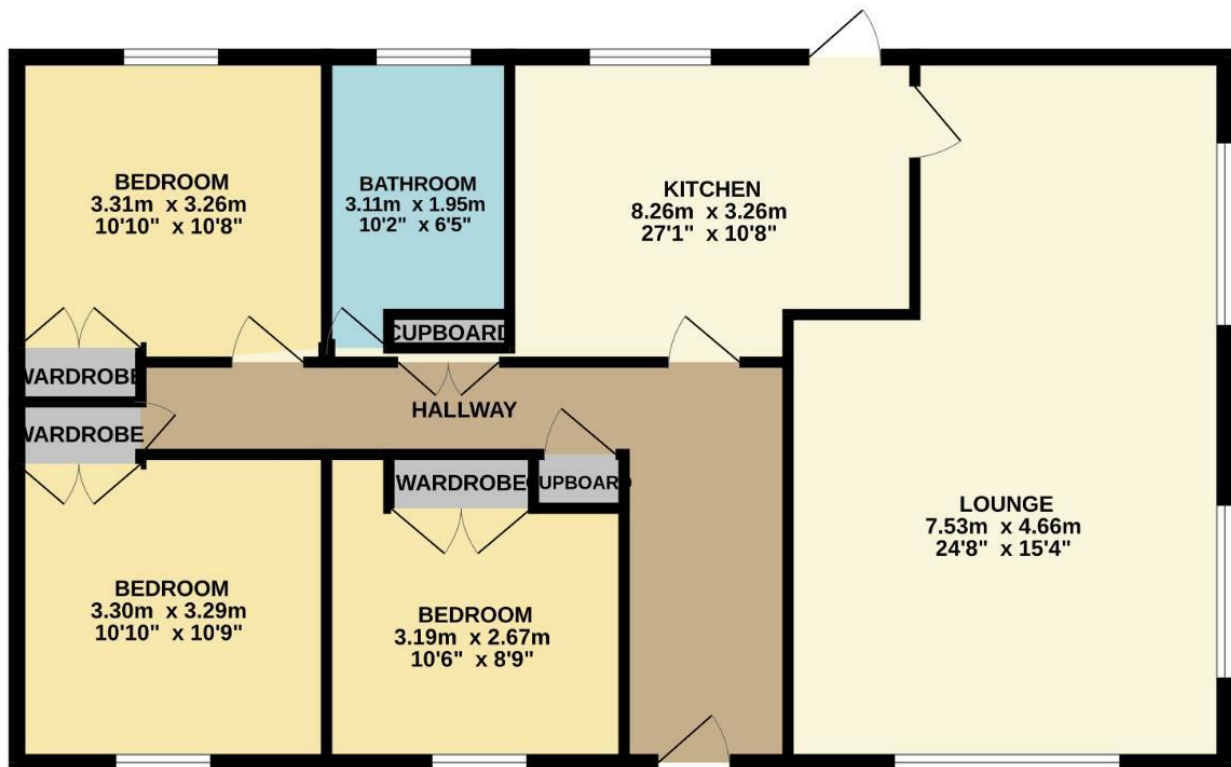
- BRAND NEW KITCHEN
- NEWLY DECORATED
- THREE DOUBLE BEDROOMS WITH FITTED WARDROBES
- GENEROUS GARDEN
- CALL NOW TO VIEW
- NEW FLOORING THROUGHOUT
- SEMI RURAL LOCATION
- OFF ROAD PARKING
- AVAILABLE EARLY MAY



Council Tax Band: D - EPC Rating: E 40



GROUND FLOOR  
97.2 sq.m. (1046 sq.ft.) approx.



TOTAL FLOOR AREA : 97.2 sq.m. (1046 sq.ft.) approx.

Whilst every attempt has been made to ensure the accuracy of the floorplan contained here, measurements of doors, windows, rooms and any other items are approximate and no responsibility is taken for any error, omission or mis-statement. This plan is for illustrative purposes only and should be used as such by any prospective purchaser. The services, systems and appliances shown have not been tested and no guarantee as to their operability or efficiency can be given.  
Made with Metropix ©2025

