



Gimbert Road, Ely, CB7 5FD

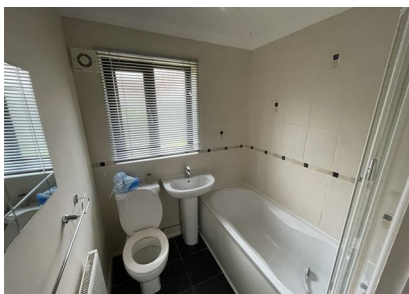
Rent - £800 PCM

Deposit - £923

*We are currently fully booked for viewings. *

Well maintained bungalow with accommodation comprising sitting room, kitchen, double bedroom and bathroom, front and rear gardens and two allocated parking spaces. Viewing highly recommended.

- SEMI-DETACHED BUNGALOW
- FRONT & REAR GARDENS
- ONE DOUBLE BEDROOM
- AVAILABLE NOW
- TWO ALLOCATED PARKING SPACES
- GAS CENTRAL HEATING
- EPC RATING C
- COUNCIL TAX BAND A



Council Tax Band: A - EPC Rating: null

GROUND FLOOR



Whilst every attempt has been made to ensure the accuracy of the floorplan contained here, measurements of doors, windows, rooms and any other items are approximate and no responsibility is taken for any error, omission or mis-statement. This plan is for illustrative purposes only and should be used as such by any prospective purchaser. The services, systems and appliances shown have not been tested and no guarantee as to their operability or efficiency can be given.
Made with Metropix 5000SE

