



, Didlington, Norfolk, IP26 5AU

Rent - £1,280 Deposit - £1,476

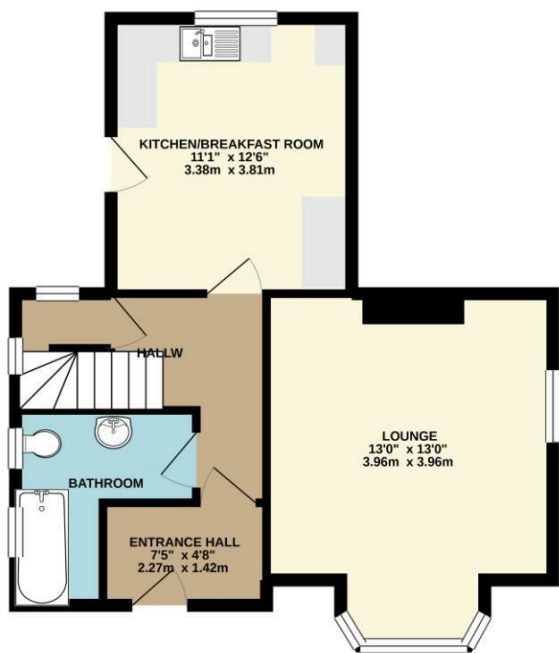
A delightful detached property situated in a rural location offering three bedrooms, kitchen, lounge and bathroom. Outside there is great size gardens and storage sheds. Commutable to RAF bases. Available now.

- AVAILABLE IMMEDIATELY
- GREAT RURAL LOCATION
- KITCHEN/BREAKFAST ROOM
- OIL HEATING
- APPROX 939 SQ FT
- 3 BEDROOMS
- LOUNGE
- GREAT SIZE GARDENS - RURAL LOCATION
- EPC RATING - E
- COMUTABLE TO RAF BASES

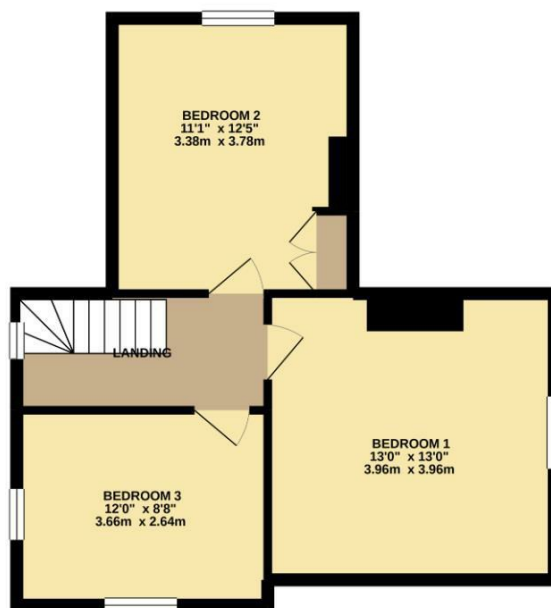


Council Tax Band: C - EPC Rating: E 39

GROUND FLOOR
481 sq.ft. (44.7 sq.m.) approx.



1ST FLOOR
458 sq.ft. (42.6 sq.m.) approx.



TOTAL FLOOR AREA : 939 sq.ft. (87.2 sq.m.) approx.

Whilst every attempt has been made to ensure the accuracy of the floorplan contained here, measurements of doors, windows, rooms and any other items are approximate and no responsibility is taken for any error, omission or mis-statement. This plan is for illustrative purposes only and should be used as such by any prospective purchaser. The services, systems and appliances shown have not been tested and no guarantee as to their operability or efficiency can be given.
Made with Metropix ©2020

