



Hall Court, Fen Drayton, CB24 4TG

Rent - £1,300 Deposit - £1,500

Nestled in the village of Fen Drayton, this three bedroom semi-detached house offers a perfect blend of comfort and convenience. The property benefits from two off road parking spaces and an enclosed rear garden.

This property is has great links to Cambridge, London and Huntingdon.

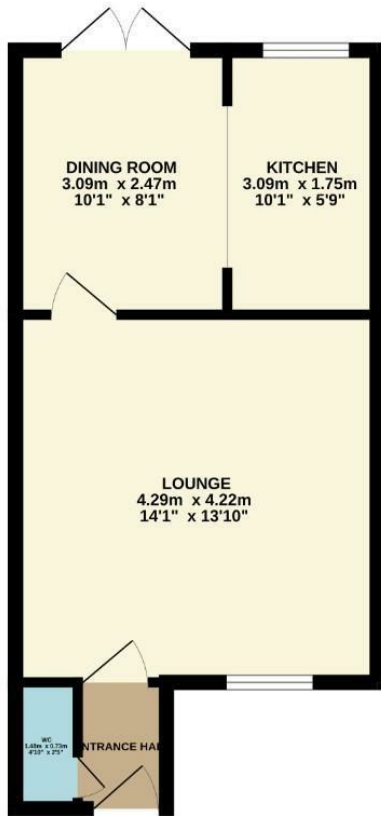
Available now please call to arrange a viewing.

- AVAILABLE NOW
- TWO OFF ROAD PARKING SPACES
- CLOSE TO CAMBRIDGE, LONDON, HUNTINGDON
- ENCLOSED GARDEN
- THREE BEDROOMS
- MODERN SHOWEROOM
- MODERN KITCHEN
- PETS CONSIDERED

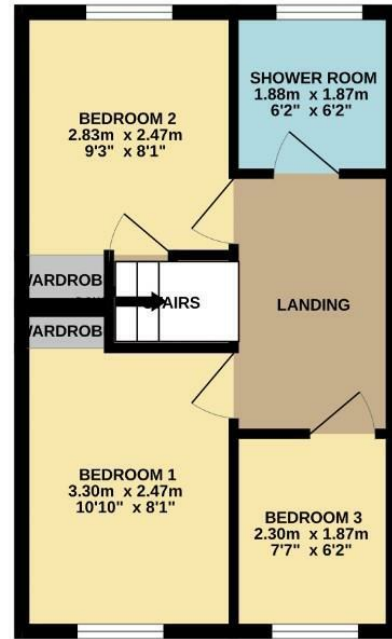


Council Tax Band: C - EPC Rating: C 73

GROUND FLOOR
33.8 sq.m. (363 sq.ft.) approx.



1ST FLOOR
31.4 sq.m. (338 sq.ft.) approx.



TOTAL FLOOR AREA: 65.1 sq.m. (701 sq.ft.) approx.

Whilst every attempt has been made to ensure the accuracy of the floorplan contained here, measurements of doors, windows, rooms and any other items are approximate and no responsibility is taken for any error, omission or mis-statement. This plan is for illustrative purposes only and should be used as such by any prospective purchaser. The services, systems and appliances shown have not been tested and no guarantee as to their operability or efficiency can be given.
Made with Metropix ©2025.

