



North Courtyard, The Manor, Bury St. Edmunds, Suffolk, IP28 6WG

Rent - £1,250 PCM Deposit - £1,442

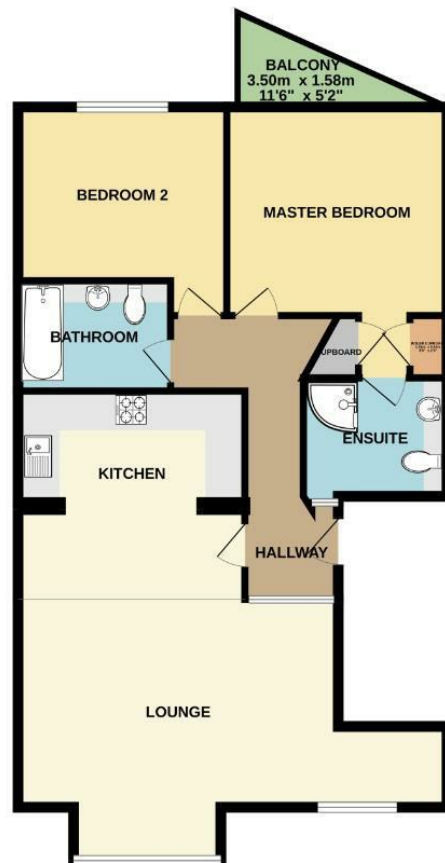
A luxury, spacious two bedroom apartment set within a gated development and 8 acres of landscaped gardens. The apartment is located within The Courtyard at The Manor in Herringwell; approx. 4 miles to Mildenhall, 8 miles to Lakenheath, 12 miles to Bury St. Edmunds and 7 miles to Newmarket.

The apartment offers well-presented and modern accommodation throughout and comprises two double bedrooms, a fully fitted kitchen, open plan living/dining room, entrance hall, en-suite bathroom to master and family bathroom. External benefits include allocated off-road parking and communal gardens.

- LUXURY APARTMENT
- PRIVATE BALCONY
- FULLY FITTED KITCHEN
- EN-SUITE TO MASTER & FAMILY BATHROOM
- GATED DEVELOPMENT
- ALLOCATED PARKING
- COUNTRYSIDE LIVING
- TWO DOUBLE BEDROOMS
- ACCESS TO 8 ACRES
- CALL NOW TO VIEW!



GROUND FLOOR
78.9 sq.m. (849 sq.ft.) approx.



TOTAL FLOOR AREA: 78.9 sq.m. (849 sq.ft.) approx.

Whilst every attempt has been made to ensure the accuracy of the floorplan contained here, measurements of doors, windows, rooms and any other items are approximate and no responsibility is taken for any error, omission or misstatement. This plan is for illustrative purposes only and should be used as such by any prospective purchaser. The services, systems and appliances shown have not been tested and no guarantee as to their operability or efficiency can be given.
Made with Mirograph ©2023

