



Manor Farm Road, West Row, Suffolk, IP28 8NZ

Rent - £1,150 PCM Deposit - £1,326

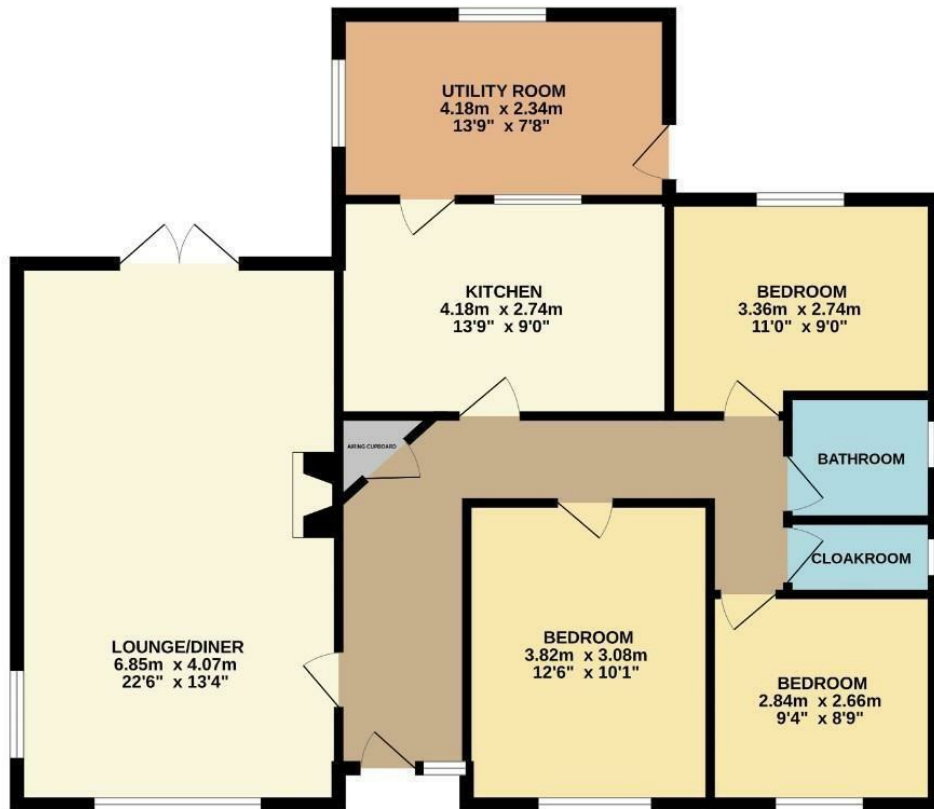
A detached bungalow located in a quiet village close to RAF Mildenhall with a spacious lounge/diner, kitchen, separate utility room, 3 bedrooms & 1 bathroom. The property also offers a garden, garage and parking.

- DETACHED BUNGALOW
- 3 GOOD SIZE BEDROOMS
- LARGE LOUNGE
- FAMILY BATHROOM
- GARAGE, GARDEN & PARKING
- CLOSE TO RAF BASES
- OIL HEATING & ENERGY RATING - E
- APPROXIMATE SIZE - 1019 SQ FT
- PETS CONSIDERED / COUNCIL TAX BAND - D
- AVAILABLE AT THE BEGINNING OF MAY



Council Tax Band: D - EPC Rating: E 41

GROUND FLOOR
94.1 sq.m. (1013 sq.ft.) approx.



TOTAL FLOOR AREA: 94.1 sq.m. (1013 sq.ft.) approx.
Whilst every attempt has been made to ensure the accuracy of the floorplan contained here, measurements of doors, windows, rooms and any other items are approximate and no responsibility is taken for any error, omission or mis-statement. This plan is for illustrative purposes only and should be used as such by any prospective purchaser. The services, systems and appliances shown have not been tested and no guarantee as to their operability or efficiency can be given.
Made with MetreX 5/2024.

