



## The Mallards, Lakenheath, Suffolk, IP27 9DH

Rent - £1,150 PCM

Deposit - £1,326

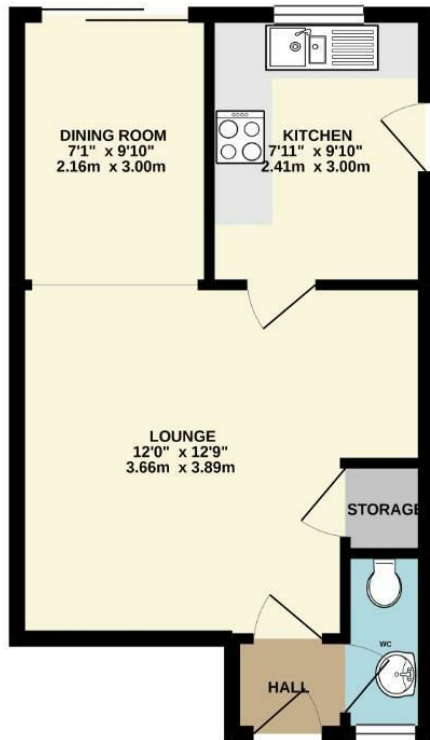
**\*AVAILABLE NOW \*LOVELY VIEWS\* CLOSE TO RAF BASES\*** This link detached house benefits from 3 bedrooms, a spacious lounge/diner, kitchen & 2.5 bathrooms. There is an enclosed garden to the rear of the property. Parking is on the road.

- LINK DETACHED HOUSE
- 3 BEDROOMS
- DINING AREA
- FAMILY BATHROOM, ENSUITE & CLOAKROOM
- ENCLOSED REAR GARDEN
- CLOSE TO RAF BASES
- MODERN ELECTRIC HEATING & ENERGY RATING - D
- APPROXIMATE SIZE - 705 SQ FT
- PETS CONSIDERED/ COUNCIL TAX BAND - C
- AVAILABLE NOW

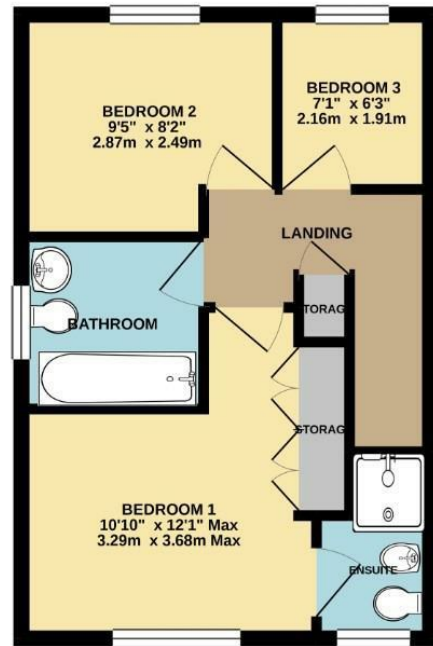




GROUND FLOOR  
365 sq.ft. (33.9 sq.m.) approx.



1ST FLOOR  
340 sq.ft. (31.6 sq.m.) approx.



TOTAL FLOOR AREA : 705 sq.ft. (65.5 sq.m.) approx.

Whilst every attempt has been made to ensure the accuracy of the floorplan contained here, measurements of doors, windows, rooms and any other items are approximate and no responsibility is taken for any error, omission or mis-statement. This plan is for illustrative purposes only and should be used as such by any prospective purchaser. The services, systems and appliances shown have not been tested and no guarantee as to their operability or efficiency can be given.  
Made with Metreplex ©2021

