



## Brandon Road, Hilborough, Norfolk, IP26 5BW

Rent - £1,650 PCM

Deposit - £1,903

A delightful barn conversion offering deceptively spacious and versatile accommodation throughout with four bedrooms, three bathrooms, open plan kitchen/lounge, mezzanine and conservatory. The property is located in the village of Hilborough, approximately half an hour from both Lakenheath and Mildenhall air bases. Outside there is an enclosed garden and parking.

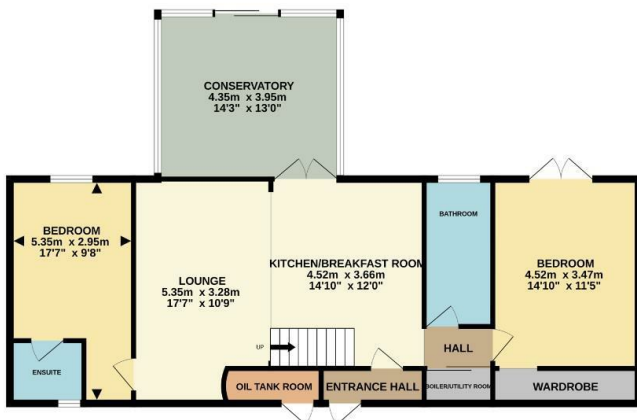
- AVAILABLE END MARCH
- 3 BATHROOMS
- OPEN PLAN KITCHEN/LOUNGE
- FULLY ENCLOSED GARDEN
- APPROX 1938 SQ FT
- 4 BEDROOMS
- BARN CONVERSION
- ADDITION OF CONSERVATORY
- OIL HEATING & EPC RATING - C
- VIEWING HIGHLY RECOMMENDED



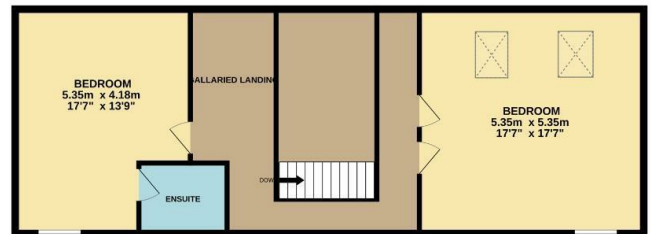
Council Tax Band: D - EPC Rating: C 70



GROUND FLOOR  
97.4 sq.m. (1049 sq.ft.) approx.



1ST FLOOR  
80.2 sq.m. (864 sq.ft.) approx.



TOTAL FLOOR AREA : 177.7 sq.m. (1913 sq.ft.) approx.

Whilst every attempt has been made to ensure the accuracy of the floorplan contained here, measurements of doors, windows, rooms and any other items are approximate and no responsibility is taken for any error, omission or mis-statement. This plan is for illustrative purposes only and should be used as such by any prospective purchaser. The services, systems and appliances shown have not been tested and no guarantee as to their operability or efficiency can be given.  
Made with Metropix ©2025

