

Apartment 14 South Courtyard, The Manor - Guide Price

Herringswell IP28 6WF

shires

Estate & Letting Agents



"Consistently providing outstanding service to our clients"

Guide Price £200,000

The Property

This well-presented three bedroom, first floor apartment is situated in the highly regarded gated development of The Manor, Herringswell. The apartment is sits within 8.4 acres of communal grounds and benefits from its own balcony which is accessed from the master bedroom. The apartment also offers a range of attractive features including a master bedroom with en-suite shower-room, two further double bedrooms, a family bathroom and an open-plan kitchen/living area with a range of integrated appliances.

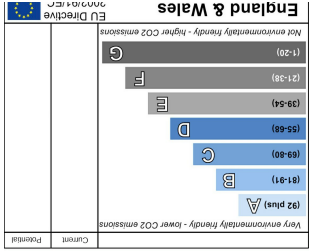
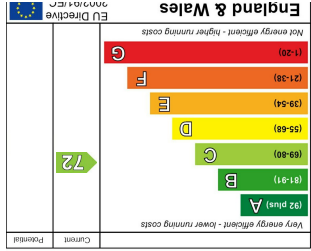
Features

- Modern Open Plan Accommodation
- Gated Development
- Communal Gardens
- Allocated Parking
- Integrated Appliances
- Ideal Buy To Let
- Spacious Bedrooms
- CHAIN FREE



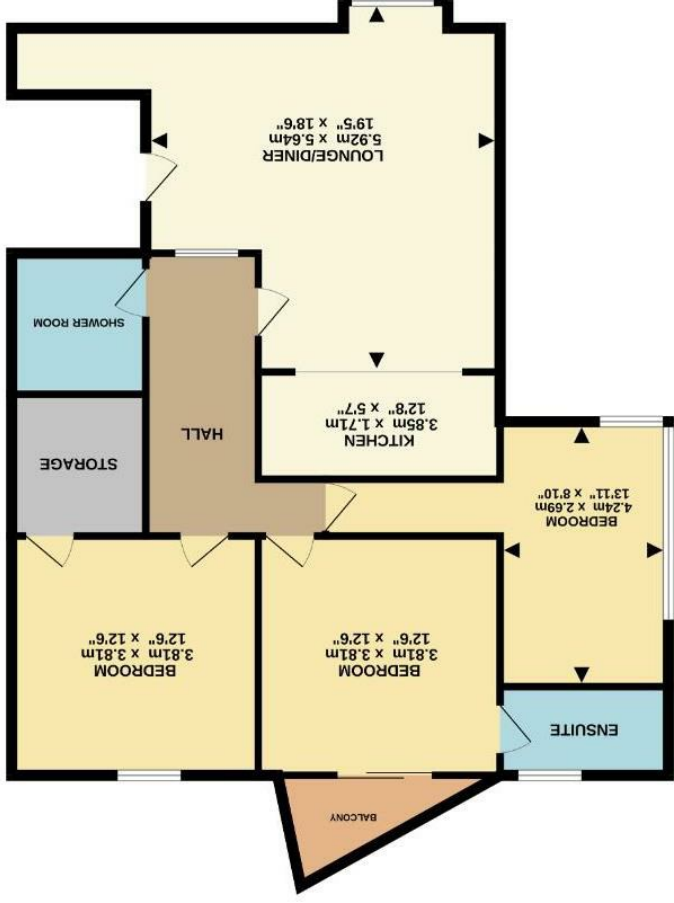


These sales particulars have been produced as a general guide only and we would draw to your attention that we have not carried out a detailed Survey of the property nor have we tested services, appliances or specific fittings. Whilst measurements and statements given within the details are provided in good faith, their accuracy should not be relied upon. If there are any points about which you may be uncertain or would like further clarification, we would suggest that you telephone this office and speak to our staff who will endeavour to assist you.



While every attempt has been made to ensure the accuracy of the foregoing contained here, measurements of doors, windows, closets and other items are approximate and no responsibility is taken for any errors, omissions, omissions and/or omissions. The general, figures and quantities shown here are based on such by prospective purchaser. The general, figures and quantities shown here are based on such by prospective purchaser. As to their quantity or sufficiency can be given.

Made with Microsoft Word 2003



GROUND FLOOR
106.2 sq.m. (1143 sq.ft.) approx.



Shires Residential
4 New Street, Mildenhall, Suffolk, IP28 7EN
T: 01638 712132
E: mildenhall@shiresresidential.com
www.shiresresidential.com

E: mildenhall@shiresresidential.com