

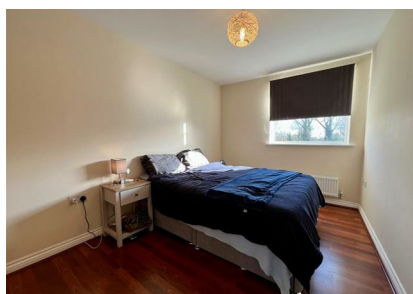


Dobede Way, Ely, CB7 5FN

Rent - £1,000 PCM Deposit - £1,153

An exceptionally well presented two bedroom apartment located within a popular development in Soham. In brief, the apartment comprises entrance hall, open plan kitchen/living/dining area, two double bedrooms and bathroom. Externally the property benefits from allocated off road parking and a private balcony over looking the river.

- MODERN, SPACIOUS SECOND FLOOR APARTMENT
- 2 GOOD SIZED BEDROOMS
- OPEN PLAN ACCOMMODATION
- FAMILY BATHROOM
- CAR PORT PARKING
- PRIVATE BALCONY WITH VIEWS OVER RIVER
- GAS CENTRAL HEATING - EPC RATING B
- APPROXIMATE SIZE 559 SQ FT
- COUNCIL TAX BAND A
- AVAILABLE NOW / NO PETS PLEASE



Council Tax Band: A - EPC Rating: B 83

