

1 Cow Keeping Corner The Green - Asking Price £280,000

West Row Bury St. Edmunds Suffolk IP28 8QJ

shires

Estate & Letting Agents



"Consistently providing outstanding service to our clients"

Asking Price £280,000

The Property

Nestled in the charming village of West Row, this delightful Victorian end-terrace house is a true gem waiting to be discovered. Boasting two reception rooms, three cosy bedrooms, and a well-appointed bathroom, this property offers a perfect blend of comfort and character. There is even parking for 4 vehicles!

One of the highlights of this property is its idyllic location, surrounded by picturesque fields, providing a secluded setting for you to unwind and enjoy the beauty of the countryside. Whether you're relaxing in the garden or taking a leisurely stroll in the neighbourhood, you'll appreciate the peace and serenity that this home offers.

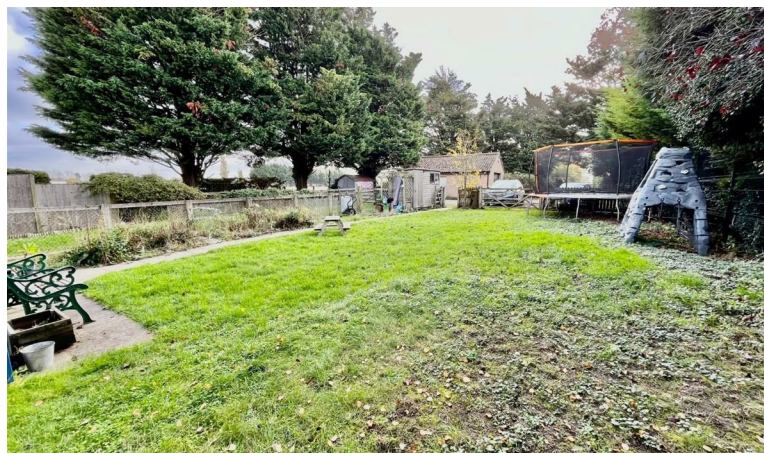
The electric radiators and double-glazed windows ensure that you stay warm and comfortable throughout the year, no matter the season.

Don't miss this opportunity to own a piece of history in a sought-after location. This 3-bedroom Victorian cottage is a rare find, offering a perfect blend of traditional charm and modern convenience. Book a viewing today and step into your own slice of countryside paradise.

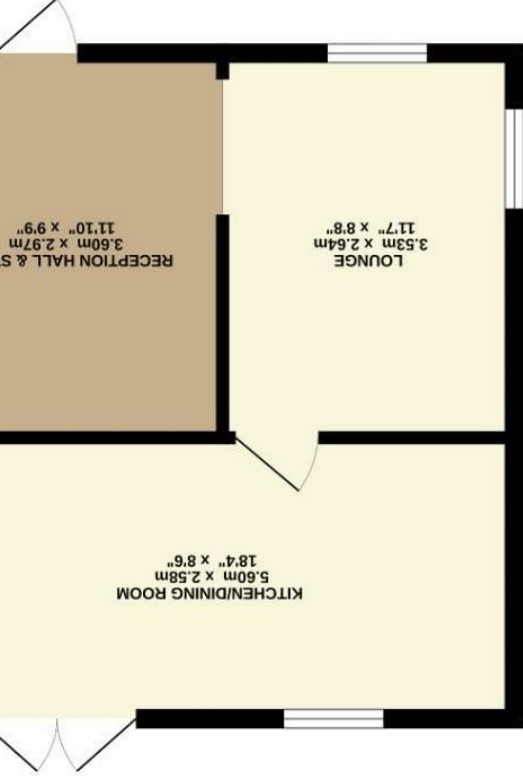
Features

- SEMI RURAL LOCATION OVER LOOKING FIELDS
- 3 BEDROOM END OF TERRACE HOUSE
- KITCHEN/DINER WITH FULLY INTEGRATED APPLIANCES
- MODERN FIRST FLOOR BATHROOM/WC
- DOUBLE GLAZED THROUGHOUT
- LARGE GARDENS FRONT, SIDE AND REAR
- EXCLUSIVE AREA OF JUST 3 PROPERTIES
- OFTEN REQUESTED VILLAGE OF WEST ROW
- RECEPTION HALL PLUS LOUNGE
- CALL NOW TO BOOK YOUR VIEWING!

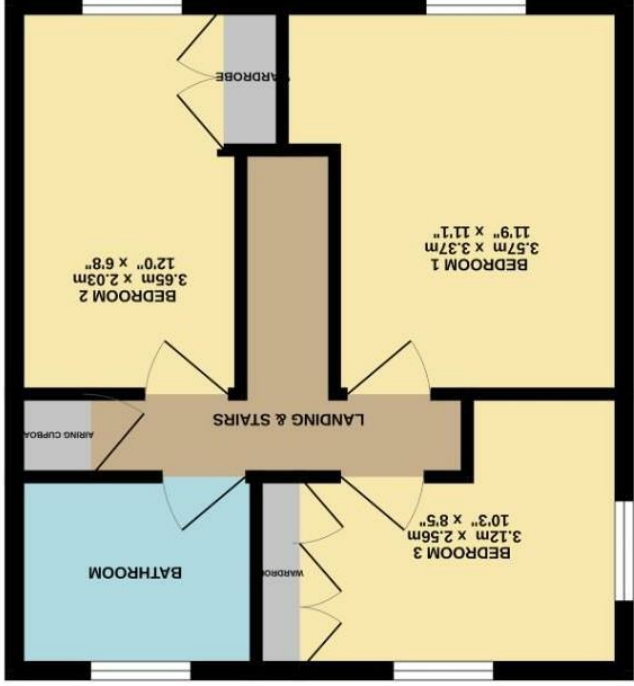




These sales particulars have been produced as a general guide only and we would draw to your attention that we have not carried out a detailed Survey of the property nor have we tested services, appliances or specific fittings. Whilst measurements and statements given within the details are provided in good faith, their accuracy should not be relied upon. If there are any points about which you may be uncertain or would like further clarification, we would suggest that you telephone this office and speak to our staff who will endeavour to assist you.

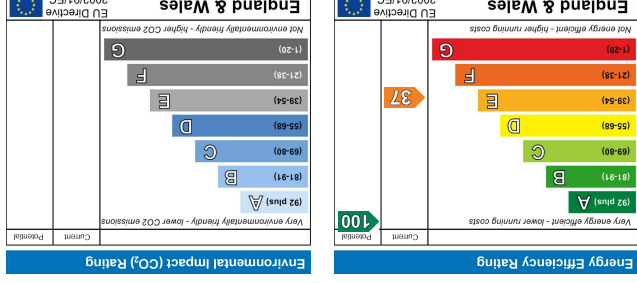


GROUND FLOOR
34.2 sq.m. (368 sq.ft.) approx.



1ST FLOOR
34.2 sq.m. (368 sq.ft.) approx.

Whist every attempt has been made to ensure the accuracy of the floorplan contained here, measurements of doors, windows, rooms and any other items are approximate and no responsibility is taken for any error, omission or mis-statement. This plan is for illustrative purposes only and should be used as such by any prospective purchaser. The services, systems and appliances shown have not been tested and no guarantee as to their operability or efficiency can be given.
Made with Metropix ©2024



Shires Residential
4 New Street, Mildenhall, Suffolk, IP28 7EN
T: 01638 712132
E: mildenhall@shiresresidential.com
www.shiresresidential.com