



## Diamond Jubilee Close, Soham, Cambs, CB7 5ZN

Rent - £1,850 PCM      Deposit - £2,134

Spacious family home situated in charming village location. Spacious accommodation featuring; 3 receptions, 4 double size bedrooms, 2 with dressing rooms & 3.5 bathrooms.

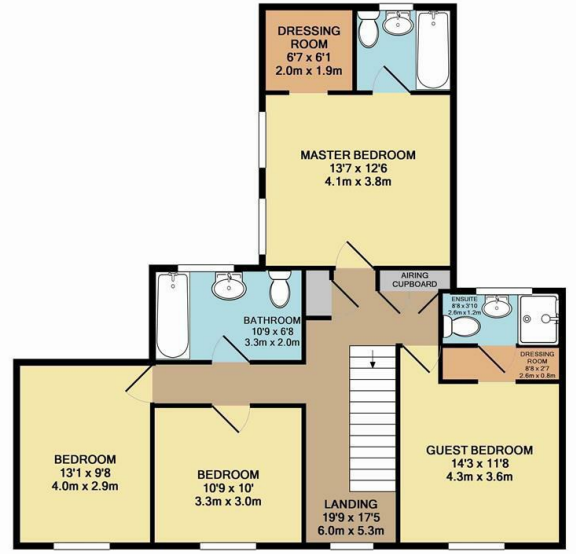
- DETACHED FAMILY HOME
- 4 GOOD SIZED BEDROOMS
- SEPERATE DINING ROOM & STUDY
- 2 EN-SUITES, FAMILY BATHROOM & CLOAKROOM
- ENCLOSED GARDEN, GARAGE & PARKING
- SPACIOUS KITCHEN
- GAS HEATING & ENERGY RATING B
- APPROXIMATE SIZE 2142 SQ FT
- PETS CONSIDERED
- AVAILABLE NOW



Council Tax Band: E - EPC Rating: B 86



GROUND FLOOR  
 APPROX. FLOOR  
 AREA 1201 SQ.FT.  
 (111.5 SQ.M.)



1ST FLOOR  
 APPROX. FLOOR  
 AREA 941 SQ.FT.  
 (87.4 SQ.M.)

TOTAL APPROX. FLOOR AREA 2142 SQ.FT. (199.0 SQ.M.)

Whilst every attempt has been made to ensure the accuracy of the floor plan contained here, measurements of doors, windows, rooms and any other items are approximate and no responsibility is taken for any error, omission, or mis-statement. This plan is for illustrative purposes only and should be used as such by any prospective purchaser. The services, systems and appliances shown have not been tested and no guarantee as to their operability or efficiency can be given.

Made with Metropix ©2012

