



Rookery Drove, Bury St. Edmunds, IP28 8GG

Rent - £159,995 Deposit -

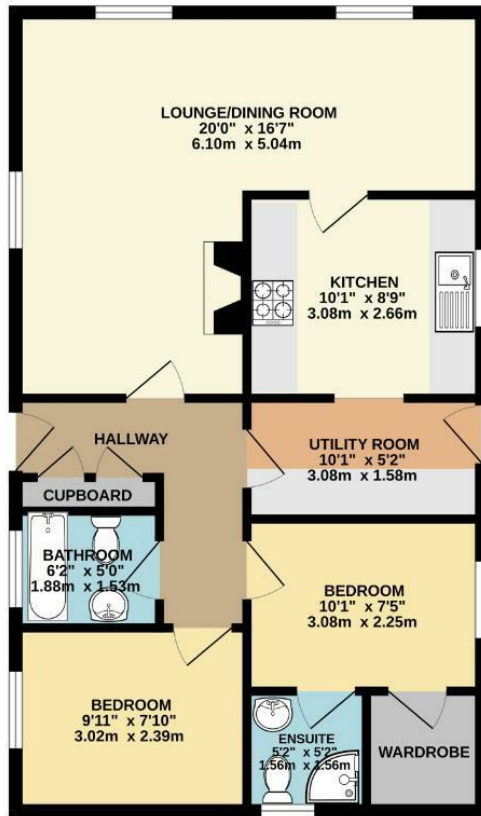
Shires Residential Sales are delighted to offer to market this brand new, beautifully finished two bedroom park home on a fantastic residential site for the over 45's in Beck Row. The internal accommodation comprises two double bedrooms, with ensuite and dressing room area to master, open plan kitchen, diner and living room and family bathroom. The home also offers driveway, and wrap-around garden. The park is extremely well looked after, with on site office and guest parking.

- BRAND NEW PARK HOME
- TILED ROOF WITH 40-YEAR WEATHERPROOF GUARANTEE
- TWO DOUBLE BEDROOMS
- FULLY FURNISHED
- BEAUTIFULLY MAINTAINED RESIDENTIAL PARK
- PROTECTED BY A 10-YEAR GOLD SHIELD STRUCTURAL WARRENTY
- OPEN PLAN LIVING
- INTEGRATED APPLIANCES
- 40X20 SQUARE FEET



Council Tax Band: - EPC Rating: null

GROUND FLOOR
679 sq.ft. (63.1 sq.m.) approx.



TOTAL FLOOR AREA: 679 sq.ft. (63.1 sq.m.) approx.

Whilst every attempt has been made to ensure the accuracy of the floorplan contained here, measurements of doors, windows, rooms and any other items are approximate and no responsibility is taken for any error, omission or misstatement. This plan is for illustrative purposes only and should be used as such by any prospective purchaser. The services, systems and appliances shown have not been tested and no guarantee as to their operability or efficiency can be given.
Made well, Merseyside ©2023

