



10 The Street, Worlington, Suffolk, IP28 8RU

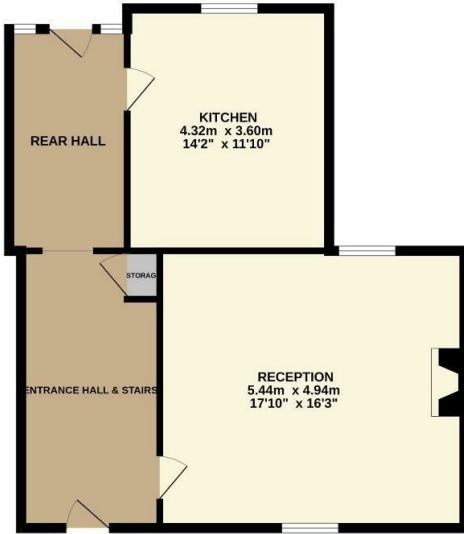
Rent - £1,500 PCM Deposit - £1,730

Semi Detached spacious character property located on a farm in the often requested village of Worlington. This property compromises of 3 bedrooms, a family bathroom, spacious lounge, modern kitchen & dining area. Contact us now to book a viewing on this unique character home.

- SEMI DETACHED HOUSE
- 3 GOOD SIZED BEDROOMS
- CLOSE TO RAF BASES
- FAMILY BATHROOM
- PARKING FOR 2 VEHICLES
- USE OF COMMUNAL AREAS FOR BBQS ETC.
- ELECTRIC HEATING & ENERGY RATING - E
- DOUBLE GLAZING THROUGHOUT
- SORRY NO PETS
- AVAILABLE NOW



GROUND FLOOR
62.3 sq.m. (671 sq.ft.) approx.



1ST FLOOR
81.9 sq.m. (882 sq.ft.) approx.



TOTAL FLOOR AREA: 144.2 sq.m. (1553 sq.ft.) approx.

Whilst every attempt has been made to ensure the accuracy of the floorplan contained here, measurements of doors, windows, rooms and any other items are approximate and no responsibility is taken for any error, omission or mis-statement. This plan is for illustrative purposes only and should be used as such by any prospective purchaser. The services, systems and appliances shown have not been tested and no guarantee as to their operability or efficiency can be given.
Made with Metropix ©2024

