



Cedar Court, Soham, Cambridgeshire, CB7 5FL

Rent - £800 PCM

Deposit - £923

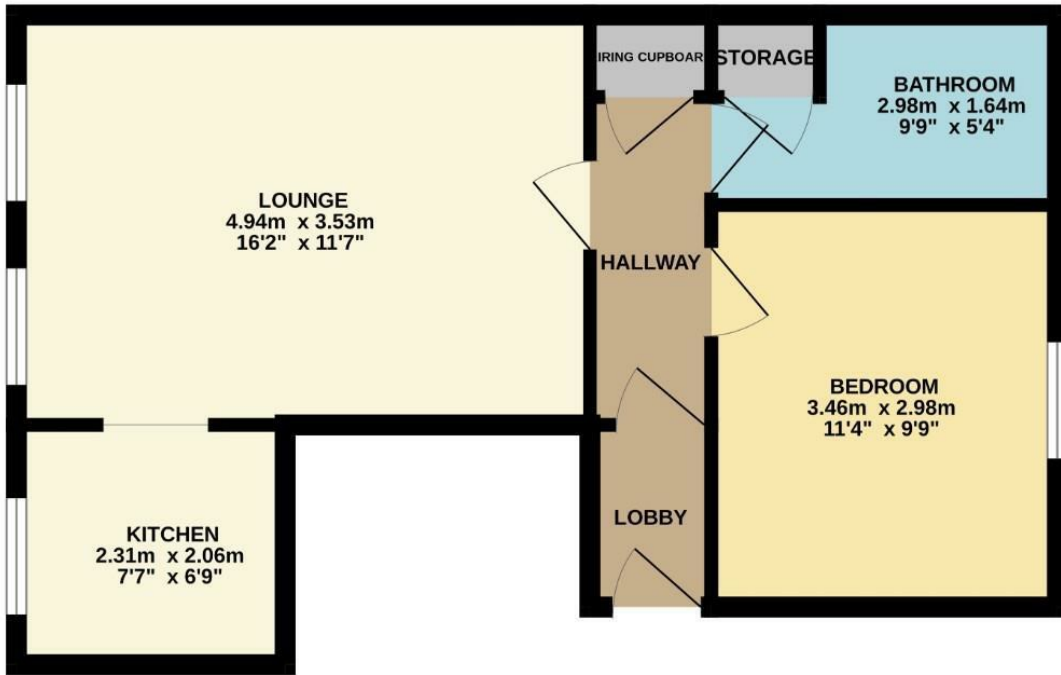
A recently decorated 1 bedroom top floor apartment located in Soham close to local facilities. The property has an allocated parking space and there are further visitors spaces available in the parking area. The property has a good sized bedroom with an arched window to the front, a large lounge with kitchen off and a bathroom. The property has electric heating and has been recently redecorated throughout. Contact us now to book a viewing!

- AVAILABLE IMMEDIATELY
- ALLOCATED PARKING PLUS VISITOR PARKING
- KITCHEN
- 3 PIECE BATHROOM
- SORRY NO PETS
- 1 BEDROOM TOP FLOOR APARTMENT
- LARGE LOUNGE
- GENEROUS SIZED BEDROOM WITH ARCH WINDOW
- ELECTRIC HEATING
- CONTACT US NOW TO VIEW



Council Tax Band: A - EPC Rating: D 65

GROUND FLOOR
42.7 sq.m. (460 sq.ft.) approx.



TOTAL FLOOR AREA: 42.7 sq.m. (460 sq.ft.) approx.
Whilst every attempt has been made to ensure the accuracy of the floorplan contained here, measurements of doors, windows, rooms and any other items are approximate and no responsibility is taken for any error, omission or mis-statement. This plan is for illustrative purposes only and should be used as such by any prospective purchaser. The services, systems and appliances shown have not been tested and no guarantee as to their operability or efficiency can be given.
Made with Metropix 5/2024.

