



Marina Close, Thetford, IP24 2GD

Rent - £1,125 PCM Deposit - £1,298

Available immediately!

Only a few years old, this 2 bedroom semi detached house with generous sized garden and parking to the side and rear, the side parking area has an electric car charging point. The house was built by Hopkins Homes and has a fitted kitchen that comes with appliances including oven, hob, dish washer, washing machine and fridge/freezer. The house is located on the northern outskirts of Thetford and accessible to A11 for the Airbases at Mildenhall & Lakenheath

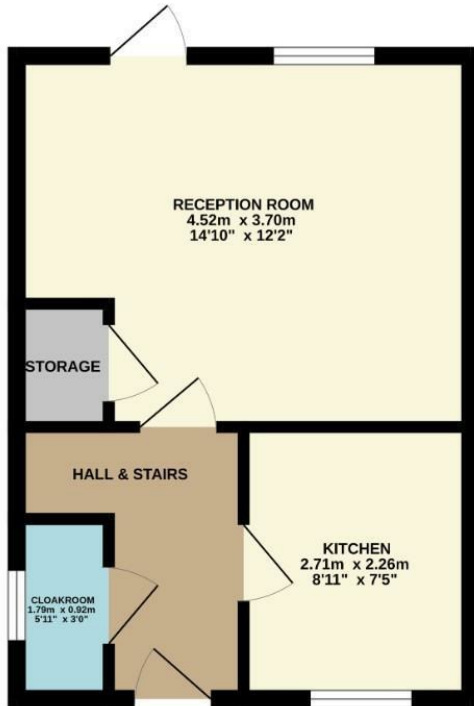
Contact us now to book a viewing

- 2 BEDROOM SEMI DETACHED HOUSE
- ONLY A FEW YEARS OLD
- ENCLOSED REAR GARDEN
- DOUBLE GLAZING
- ACCESSIBLE TO MILDENHALL AND LAKENHEATH AIR BASES
- PARKING TO THE SIDE
- FITTED KITCHEN WITH APPLIANCES
- GAS RADIATOR HEATING
- FIRST FLOOR BATHROOM AND GROUND FLOOR CLOAKROOM
- AVAILABLE STRAIGHT AWAY

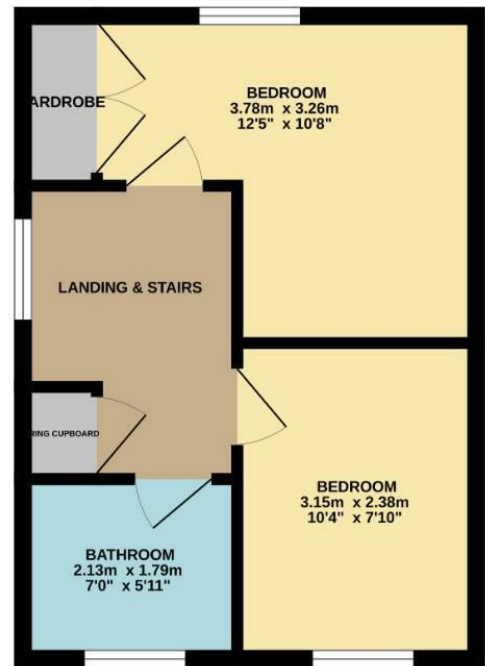


Council Tax Band: B - EPC Rating: B 83

GROUND FLOOR
29.0 sq.m. (312 sq.ft.) approx.



1ST FLOOR
29.0 sq.m. (312 sq.ft.) approx.



TOTAL FLOOR AREA : 57.9 sq.m. (623 sq.ft.) approx.

Whilst every attempt has been made to ensure the accuracy of the floorplan contained here, measurements of doors, windows, rooms and any other items are approximate and no responsibility is taken for any error, omission or mis-statement. This plan is for illustrative purposes only and should be used as such by any prospective purchaser. The services, systems and appliances shown have not been tested and no guarantee as to their operability or efficiency can be given.
Made with Metropix ©2024

