

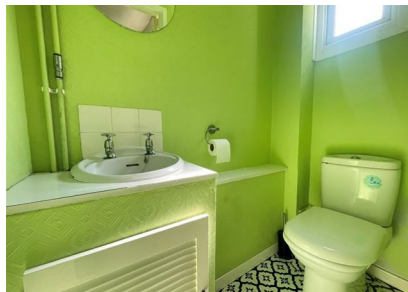


Selwyn Close, Bury St. Edmunds, IP28 7QB
Rent - £1,125 PCM Deposit - £1,298

Welcome to this charming property located in Selwyn Close, Mildenhall, Bury St. Edmunds. This delightful house boasts 3 bedrooms, making it perfect for a growing family or those in need of extra space.

As you step inside, you'll be greeted by a spacious interior that offers plenty of room for all your needs. The layout of the house provides a cosy yet functional living space.

- END OF TERRACE HOUSE
- 3 GOOD SIZED BEDROOMS
- KITCHEN/DINER
- FAMILY BATHROOM & CLOAKROOM
- ENCLOSED REAR GARDEN & ON STREET PARKING
- CLOSE TO RAF BASES
- GAS HEATING & ENERGY RATING - C
- APPROXIMATE SIZE - 861 SQ FT
- PETS CONSIDERED / COUNCIL TAX BAND A
- AVAILABLE IMMEDIATELY



Council Tax Band: A - EPC Rating: C 71

