



53 High Street, Chippenham, Cambridgeshire, CB7 5PP

Rent - £2,800 PCM

Deposit - £3,230

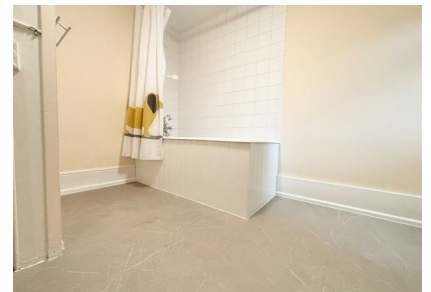
An early Victorian era home located in a peaceful private gated drive just off the High Street in Chippenham.

The property has accommodation of up to 5 bedrooms along with 3 reception rooms and 3 bathrooms and it retains many original features including fireplaces, high ceilings and stone floors. There is even a vaulted 3 room cellar!

Set in around 1 acre of land, the property has a large garden which is mainly laid to lawn. (The landlord is prepared to agree terms regarding lawn cutting) and there is plenty of parking directly in front of the house.

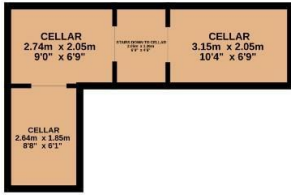
Call now to book a viewing so you do not miss out on this wonderful character home.

- DETACHED FAMILY HOME
- 5 GOOD BEDROOMS
- 3 RECEPTION ROOMS
- 3 BATHROOMS
- LARGE GARDEN & AMPLE PARKING
- OFTEN REQUESTED VILLAGE LOCATION
- OIL HEATING & ENERGY RATING - E
- APPROXIMATE SIZE - 2800 SQ FEET
- PETS CONSIDERED
- AVAILABLE FROM START OF SEPTEMBER

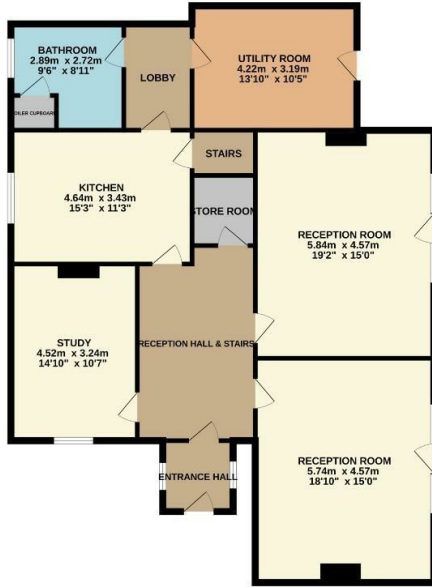


Council Tax Band: G - EPC Rating: E 39

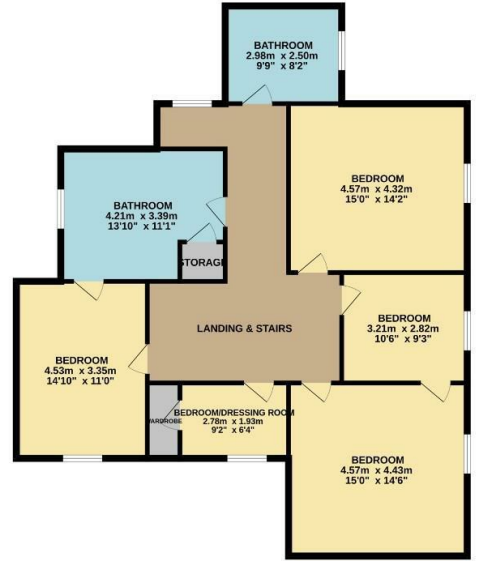
BASEMENT
19.8 sq.m. (213 sq.ft.) approx.



GROUND FLOOR
130.9 sq.m. (1409 sq.ft.) approx.



1ST FLOOR
115.6 sq.m. (1245 sq.ft.) approx.



TOTAL FLOOR AREA: 266.3 sq.m. (2867 sq.ft.) approx.

Whilst every attempt has been made to ensure the accuracy of the floorplan contained here, measurements of doors, windows, rooms and any other items are approximate and no responsibility is taken for any error, omission or mis-statement. This plan is for illustrative purposes only and should be used as such by any prospective purchaser. The services, systems and appliances shown have not been tested and no guarantee as to their operability or efficiency can be given.
Made with Metropix ©2024

