



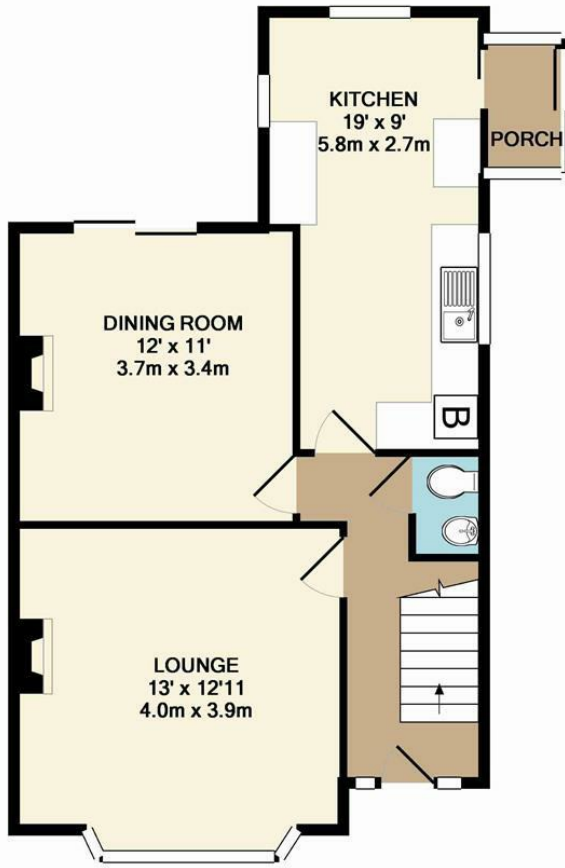
Folly Road, Mildenhall, Suffolk, IP28 7BX
Rent - £1,250 PCM Deposit - £1,442

A semi-detached house which has been modernised and refurbished to include 2 reception rooms, large kitchen, 3 bedrooms and 1.5 bathrooms. Garage & parking. Large enclosed garden. Easy distance to both Military bases.

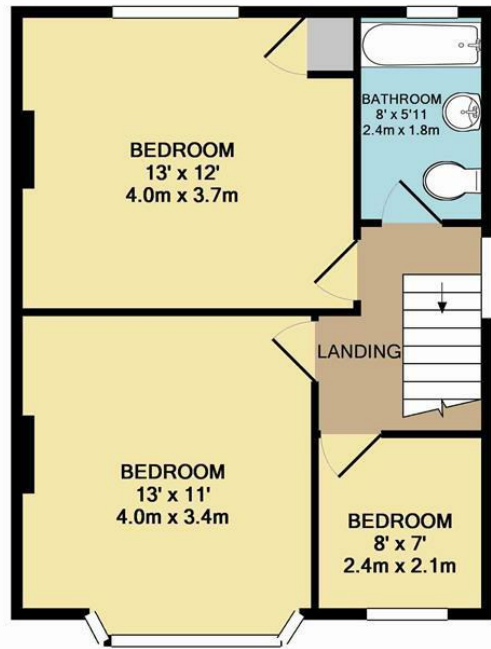
- SEMI DETACHED HOUSE
- 3 BEDROOMS
- CLOSE TO RAF BASES
- NEWLY FITTED FAMILY BATHROOM & CLOAKROOM
- GARDEN, GARAGE & PARKING
- DINING ROOM
- GAS HEATING & ENERGY RATING - E
- APPROXIMATE SIZE - 1162 SQ FT
- PETS CONSIDERED / COUNCIL TAX BAND - C
- AVAILABLE AT THE BEGINNING OF AUGUST



Council Tax Band: C - EPC Rating: E 45



GROUND FLOOR



1ST FLOOR

Whilst every attempt has been made to ensure the accuracy of the floor plan contained here, measurements of doors, windows, rooms and any other items are approximate and no responsibility is taken for any error, omission, or mis-statement. This plan is for illustrative purposes only and should be used as such by any prospective purchaser. The services, systems and appliances shown have not been tested and no guarantee as to their operability or efficiency can be given
Made with Metropix ©2015

