



Apple Close, Raf Lakenheath, IP27 9QZ
Rent - £1,440 Deposit - £1,661

Available now!

A large 3 bedroom end of terrace house located close to RAF Lakenheath

The house has undergone a recent refurbishment with works including new windows, new carpets throughout and redecoration. The house also has a modern air source heat pump and has a huge amount of storage.

Call now to view!

- AIR SOURCE HEATING
- NEW CARPETS THROUGHOUT
- 3 DOUBLE BEDROOMS
- GROUND FLOOR CLOAKROOM
- 2 CAR PARKING
- NEW DOUBLE GLAZING
- FRESHLY DECORATED
- FIRST FLOOR BATHROOM
- UTILITY ROOM
- AVAILABLE START AUGUST

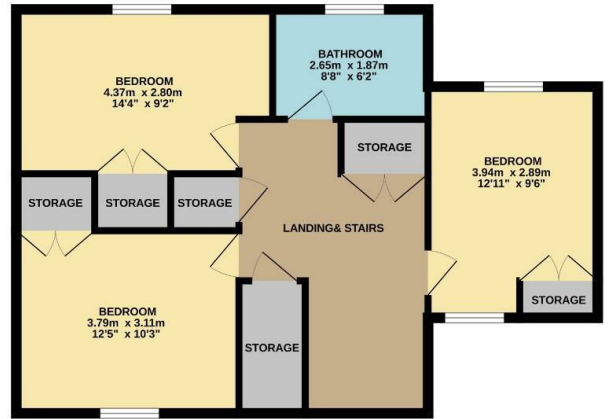


Council Tax Band: B - EPC Rating: D 60

GROUND FLOOR
55.7 sq.m. (599 sq.ft.) approx.



1ST FLOOR
59.7 sq.m. (643 sq.ft.) approx.



TOTAL FLOOR AREA : 115.4 sq.m. (1242 sq.ft.) approx.

Whilst every attempt has been made to ensure the accuracy of the floorplan contained here, measurements of doors, windows, rooms and any other items are approximate and no responsibility is taken for any error, omission or mis-statement. This plan is for illustrative purposes only and should be used as such by any prospective purchaser. The services, systems and appliances shown have not been tested and no guarantee as to their operability or efficiency can be given.
Made with Metropix ©2024

