

25 Gimbert Road - £149,950

Soham Cambridgeshire CB7 5FD



"Consistently providing outstanding service to our clients"

£149,950

The Property

A fantastic opportunity to purchase this one bedroom home benefitting from allocated parking and garden to front situated in the sought after town of Soham. The property is offered chain free, call today to view!

A one bedroom terraced bungalow offering open plan kitchen/diner/lounge, one bedroom, built in wardrobes and bathroom. In addition there is an allocated parking space and garden to front.

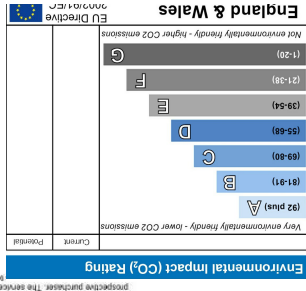
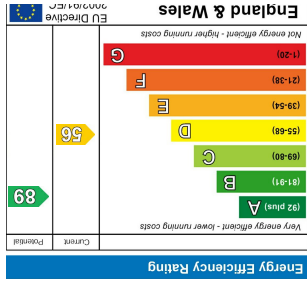
Features

- NO ONWARD CHAIN
- ONE BEDROOM
- KITCHEN/DINER/LOUNGE
- GARDEN TO FRONT
- ALLOCATED PARKING SPACE
- FREEHOLD
- ELECTRIC HEATING
- DOUBLE GLAZING
- CALL NOW TO VIEW



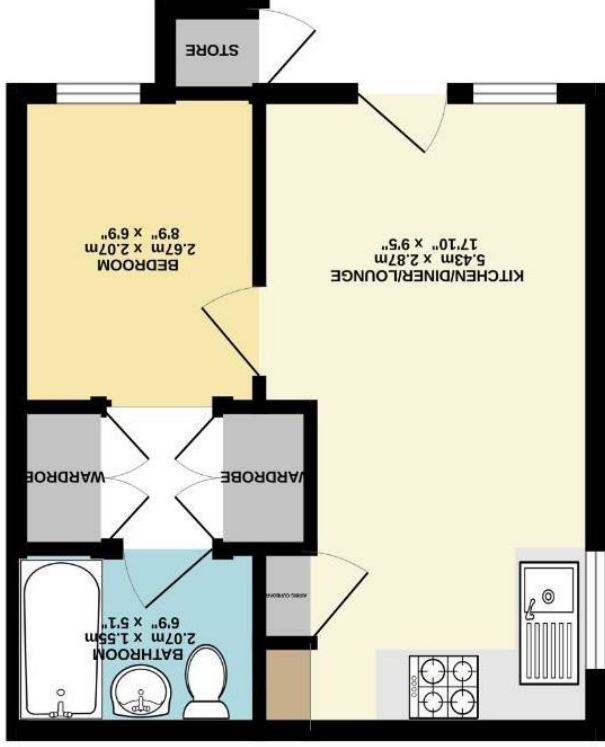
These sales particulars have been produced as a general guide only and we would draw to your attention that we have not carried out a detailed Survey of the property nor have we tested services, appliances or specific fittings. Whilst measurements and statements given within the details are provided in good faith, their accuracy should not be relied upon. If there are any points about which you may be uncertain or would like further clarification, we would suggest that you telephone this office and speak to our staff who will endeavour to assist you.





Where every effort has been made to ensure the accuracy of the figures contained here, measurements of doors, windows, ceilings and floors are approximate and no responsibility is taken for any error, omission or mis-statement. This plan is for illustrative purposes only and should be used as such by any prospective purchaser. The services, fixtures and appliances shown have not been tested and no guarantee is given.

TOTAL FLOOR AREA: 26.1 sq.m. (281 sq.ft.) approx.



GROUND FLOOR
26.1 sq.m. (281 sq.ft.) approx.



Shires Residential
 4 New Street, Mildenhall, Suffolk, IP28 7EN
 T: 01638 712132
 E: mildenhall@shiresresidential.com
 www.shiresresidential.com