

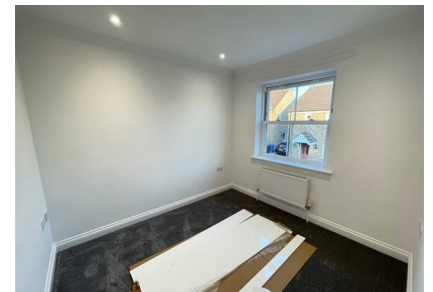


The Grange, Lakenheath, Suffolk, IP27 9BT
Rent - £1,440 PCM Deposit - £1,661

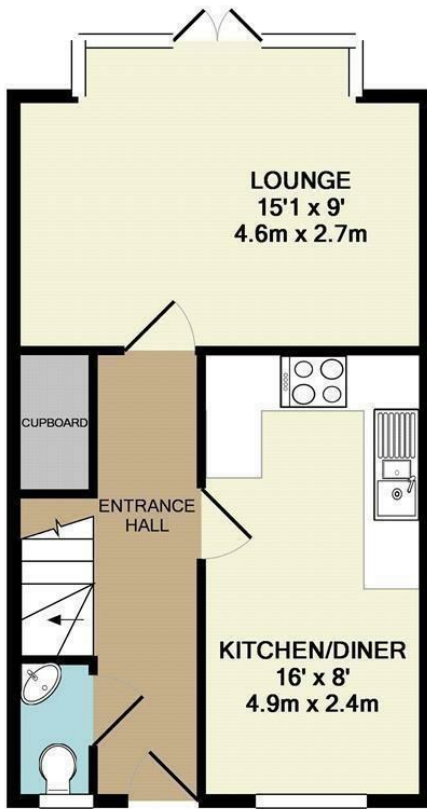
A modern 3 bedroom home located just minutes from RAF bases. The property comprises of a spacious lounge, modern kitchen, 3 good size bedrooms & 2.5 bathrooms. There is an enclosed garden, garage & off road parking.

AGENTS NOTE: In accordance with The Property Ombudsman requirements, you are advised that a member of Shires staff (or their family members) have an interest in this property.

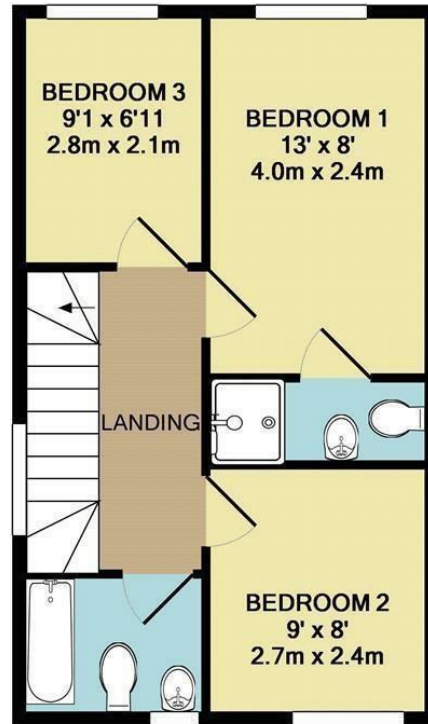
- MODERN SEMI DETACHED HOUSE
- 3 GOOD SIZE BEDROOMS
- SPACIOUS LOUNGE
- FAMILY BATHROOM, ENSUITE & CLOAKROOM
- ENCLOSED GARDEN, GARAGE & PARKING
- CLOSE TO RAF BASES
- OIL HEATING & ENERGY RATING - C
- APPROXIMATE SIZE - 861 SQ FT
- PETS CONSIDERED / COUNCIL TAX BAND B
- AVAILABLE AT THE END OF JULY



Council Tax Band: B - EPC Rating: C 75



GROUND FLOOR
APPROX. FLOOR
AREA 385 SQ.FT.
(35.8 SQ.M.)



1ST FLOOR
APPROX. FLOOR
AREA 367 SQ.FT.
(34.1 SQ.M.)

TOTAL APPROX. FLOOR AREA 752 SQ.FT. (69.9 SQ.M.)

Whilst every attempt has been made to ensure the accuracy of the floor plan contained here, measurements of doors, windows, rooms and any other items are approximate and no responsibility is taken for any error, omission, or mis-statement. This plan is for illustrative purposes only and should be used as such by any prospective purchaser. The services, systems and appliances shown have not been tested and no guarantee as to their operability or efficiency can be given

Made with Metropix ©2014

