



Dobede Way, Soham, Cambridgeshire, CB7 5FN

Rent - Asking Price £165,000 Deposit -

Nestled in the charming Dobede Way, Soham, this delightful 2-bedroom flat is a gem waiting to be discovered.

The open plan living dining kitchen area that extends to a Juliette balcony. The property features gas radiator heating and double glazing, ensuring warmth and comfort all year round.

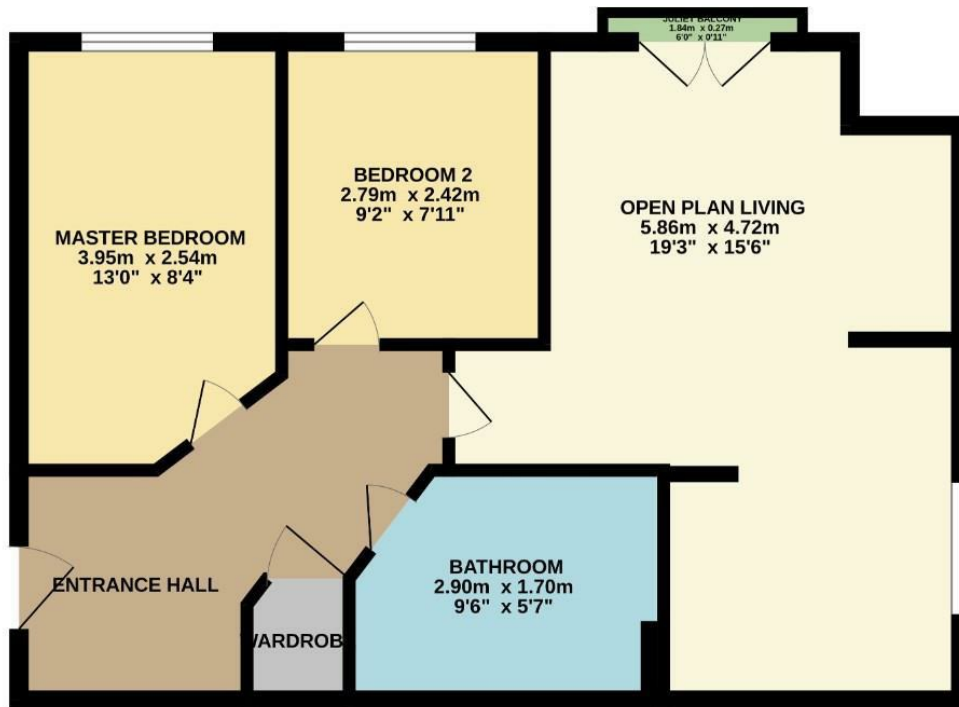
With 1 bathroom and 2 well-proportioned bedrooms, this flat is ideal for a small family, a couple, or even as an investment opportunity. The allocated parking space adds convenience to your daily routine, making coming home a

- CHAIN FREE
- GAS RADIATOR HEATING
- ALLOCATED PARKING SPACE
- 3 PIECE BATHROOM
- RENEWED BOILER
- 2 BEDROOM SECOND FLOOR APARTMENT
- DOUBLE GLAZING
- JULIETTE BALCONY TO LIVING AREA
- FITTED KITCHEN WITH OVEN AND HOB
- CALL NOW TO VIEW



Council Tax Band: A - EPC Rating: B 82

GROUND FLOOR
51.6 sq.m. (555 sq.ft.) approx.



TOTAL FLOOR AREA: 51.6 sq.m. (555 sq.ft.) approx.
Whilst every attempt has been made to ensure the accuracy of the floorplan contained here, measurements of doors, windows, rooms and any other items are approximate and no responsibility is taken for any error, omission or mis-statement. This plan is for illustrative purposes only and should be used as such by any prospective purchaser. The services, systems and appliances shown have not been tested and no guarantee as to their operability or efficiency can be given.
Made with Metropix ©2024

