



Caudle Avenue, Lakenheath, Suffolk, IP27 9AU

Rent - £1,125 PCM Deposit - £1,298

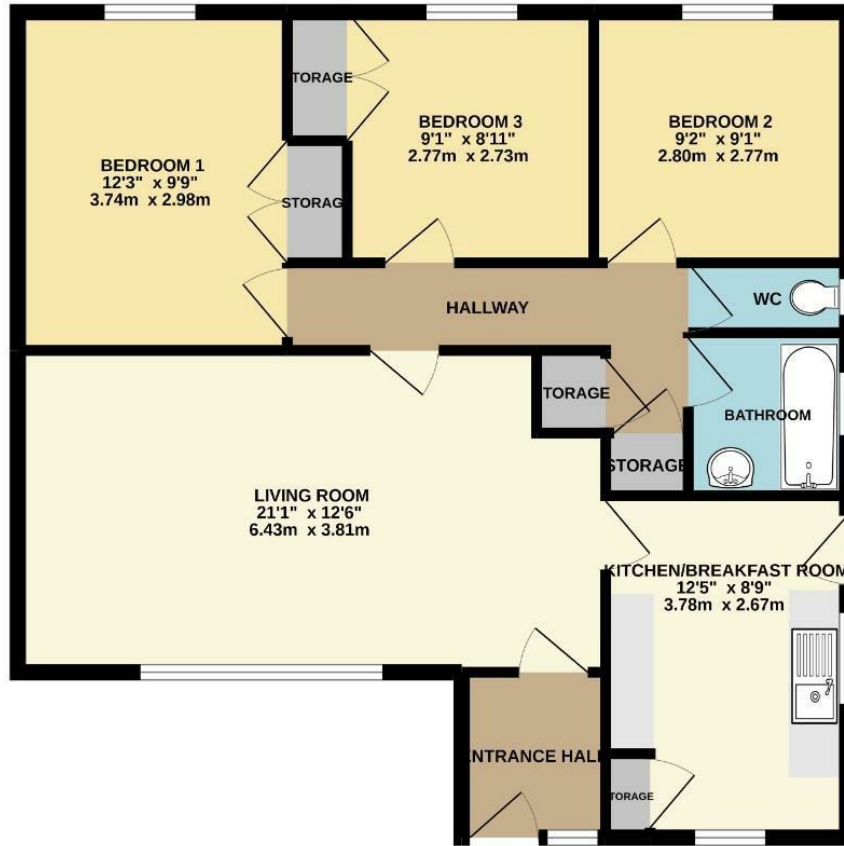
A well presented detached bungalow located in Lakenheath, close to RAF bases. Offering three bedrooms, lounge, kitchen and family bathroom. Outside there is a garage, driveway and gardens.

- DETACHED BUNGALOW
- 3 BEDROOMS
- SPACIOUS LOUNGE
- BATHROOM & SEPARATE TOILET
- GARAGE, PARKING & GARDENS
- CLOSE TO RAF BASES
- OIL HEATING & ENERGY RATING - D
- APPROXIMATE SIZE - 804 SQ FT
- PETS CONSIDERED/ COUNCIL TAX BAND B
- AVAILABLE NOW



Council Tax Band: B - EPC Rating: D 55

GROUND FLOOR
804 sq.ft. (74.7 sq.m.) approx.



TOTAL FLOOR AREA: 804 sq.ft. (74.7 sq.m.) approx.

Whilst every attempt has been made to ensure the accuracy of the floorplan contained here, measurements of doors, windows, rooms and any other items are approximate and no responsibility is taken for any error, omission or mis-statement. This plan is for illustrative purposes only and should be used as such by any prospective purchaser. The services, systems and appliances shown have not been tested and no guarantees as to their operability or efficiency can be given.
Made with Metropex ©2022

