



## Cypress Close, Mildenhall, Suffolk, IP28 7SH

Rent - £1,440 PCM      Deposit - £1,661

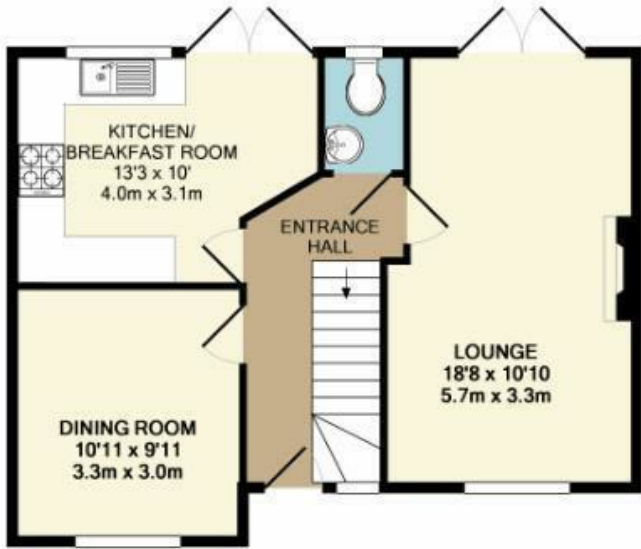
This spacious & modern 4 bedroom detached home with a stylish kitchen with built in appliances, 2.5 bathrooms, lounge & separate dining room. Fully enclosed garden, parking & garage. Close by nature walks and set within a great picturesque location. Call now to view your new home.

- MODERN DETACHED HOUSE
- 4 BEDROOMS
- DINING ROOM
- FAMILY BATHROOM, ENSUITE & CLOAKROOM
- ENCLOSED GARDEN, GARAGE & PARKING
- CLOSE TO RAF BASES
- GAS HEATING & ENERGY RATING - C
- APPROXIMATE SIZE - 1042 SQ FT
- FITTED KITCHEN WITH INTEGRATED APPLIANCES
- AVAILABLE NOW

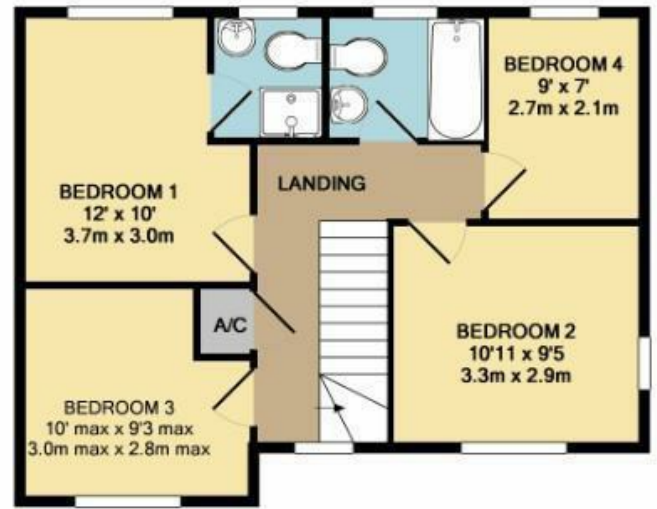


Council Tax Band: D - EPC Rating: B 81





GROUND FLOOR  
APPROX. FLOOR  
AREA 521 SQ.FT.  
(48.4 SQ.M.)



1ST FLOOR  
APPROX. FLOOR  
AREA 521 SQ.FT.  
(48.4 SQ.M.)

TOTAL APPROX. FLOOR AREA 1042 SQ.FT. (96.8 SQ.M.)

Whilst every attempt has been made to ensure the accuracy of the floor plan contained here, measurements of doors, windows, rooms and any other items are approximate and no responsibility is taken for any error, omission, or mis-statement. This plan is for illustrative purposes only and should be used as such by any prospective purchaser. The services, systems and appliances shown have not been tested and no guarantee as to their operability or efficiency can be given.  
Made with Metropix ©2019

