



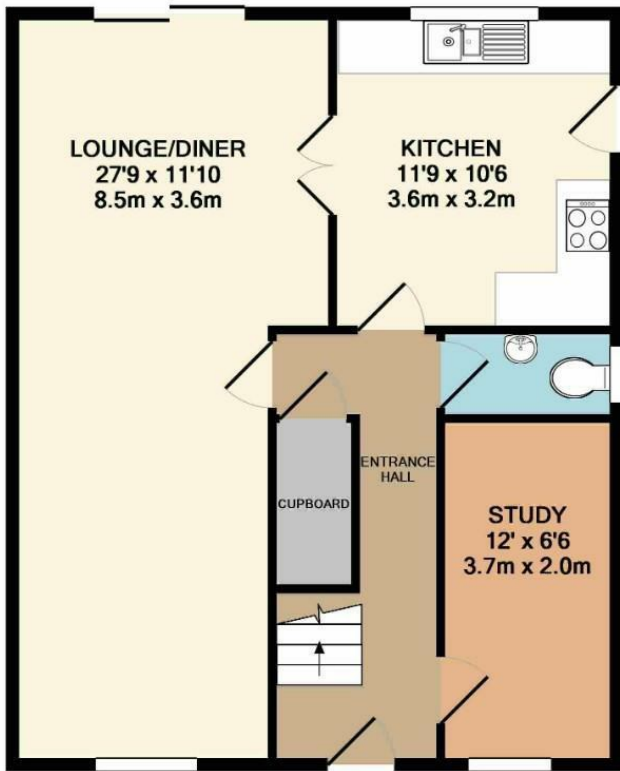
High Street, Tuddenham, Suffolk, IP28 6SA
Rent - £1,600 PCM Deposit - £1,846

Welcome to this charming 4-bedroom detached house located on High Street in the sought-after village of Tuddenham. This property boasts two reception rooms, perfect for entertaining guests or simply relaxing with the family.

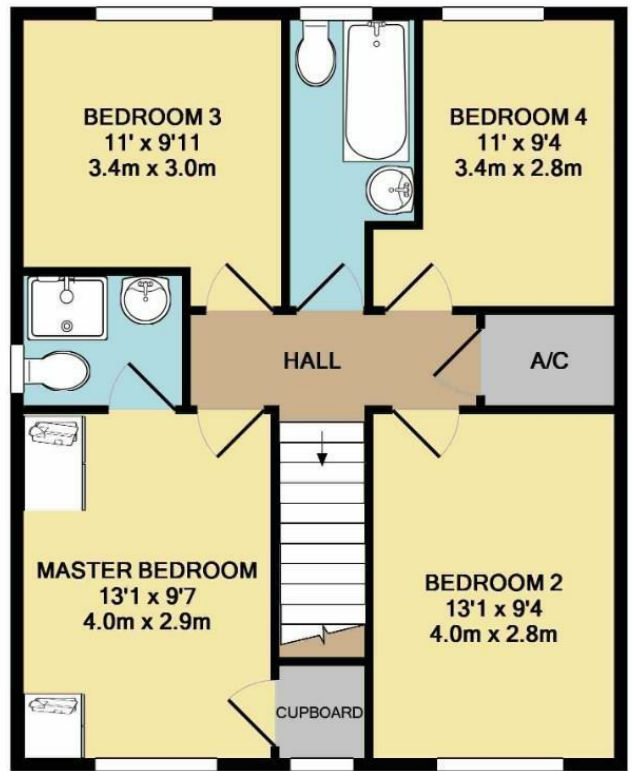
- 4 BEDROOM DETACHED HOUSE
- EN SUITE
- LOUNGE/DINER
- REAR GARDEN
- 2 CAR PARKING
- FAMILY BATHROOM
- GROUND FLOOR CLOAKROOM
- STUDY
- AVAILABLE EARLY JULY 2024
- SORRY NO PETS



Council Tax Band: E - EPC Rating: D 67



GROUND FLOOR
APPROX. FLOOR
AREA 621 SQ.FT.
(57.7 SQ.M.)



1ST FLOOR
APPROX. FLOOR
AREA 621 SQ.FT.
(57.7 SQ.M.)

TOTAL APPROX. FLOOR AREA 1242 SQ.FT. (115.4 SQ.M.)

Whilst every attempt has been made to ensure the accuracy of the floor plan contained here, measurements of doors, windows, rooms and any other items are approximate and no responsibility is taken for any error, omission, or mis-statement. This plan is for illustrative purposes only and should be used as such by any prospective purchaser. The services, systems and appliances shown have not been tested and no guarantee as to their operability or efficiency can be given
Made with Metropix ©2012

