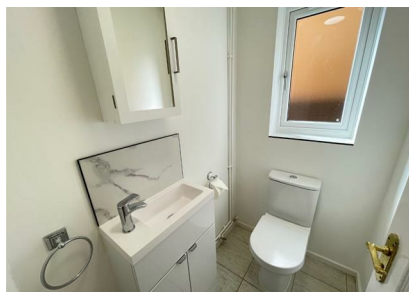




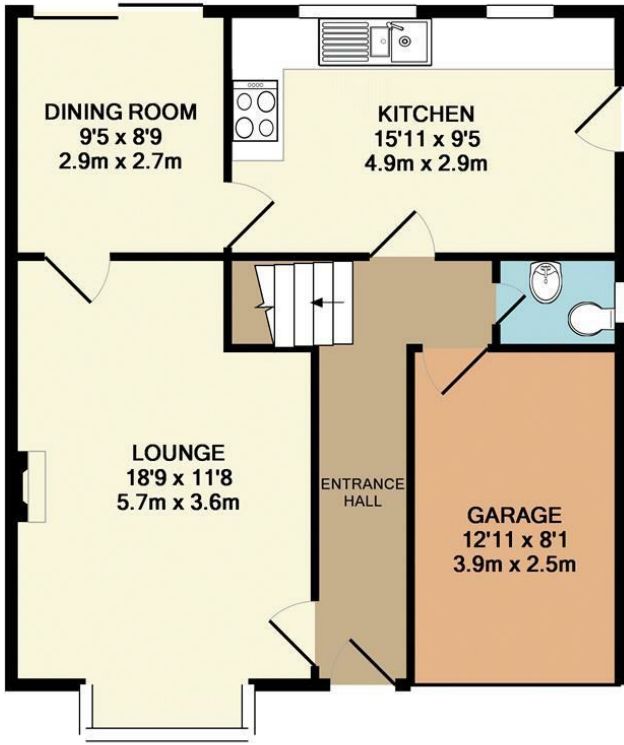
**Oxford Close, Mildenhall, Suffolk, IP28 7RP**  
**Rent - £1,600 PCM      Deposit - £1,846**

This modern 4 bedroom detached property is located on this popular estate close to RAF Mildenhall and Lakenheath. Featuring a large kitchen/breakfast area, separate lounge and dining room & 2.5 bathrooms. Integrated garage, enclosed rear garden and parking.

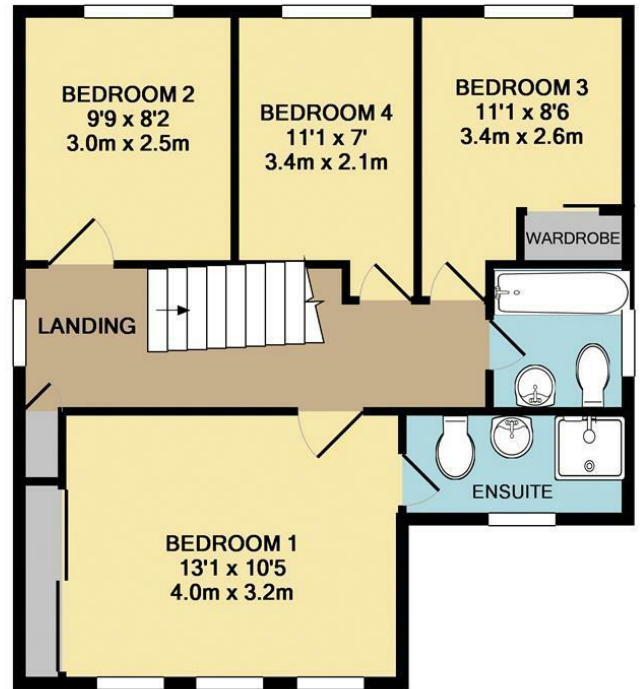
- DETACHED HOUSE
- 4 GOOD SIZE BEDROOMS
- SEPARATE DINING ROOM
- FAMILY BATHROOM, ENSUITE & CLOAKROOM
- PARKING & GARAGE & AN ENCLOSED REAR GARDEN
- CLOSE TO RAF BASES
- GAS HEATING & ENERGY RATING - D
- APPROXIMATE SIZE - 1164 SQ FT
- PETS CONSIDERED
- AVAILABLE 8TH JULY







GROUND FLOOR  
APPROX. FLOOR  
AREA 617 SQ.FT.  
(57.3 SQ.M.)



1ST FLOOR  
APPROX. FLOOR  
AREA 548 SQ.FT.  
(50.9 SQ.M.)

TOTAL APPROX. FLOOR AREA 1164 SQ.FT. (108.2 SQ.M.)

Whilst every attempt has been made to ensure the accuracy of the floor plan contained here, measurements of doors, windows, rooms and any other items are approximate and no responsibility is taken for any error, omission, or mis-statement. This plan is for illustrative purposes only and should be used as such by any prospective purchaser. The services, systems and appliances shown have not been tested and no guarantee as to their operability or efficiency can be given  
Made with Metropix ©2014

