



Windmill Close, Lakenheath, Suffolk, IP27 9BF

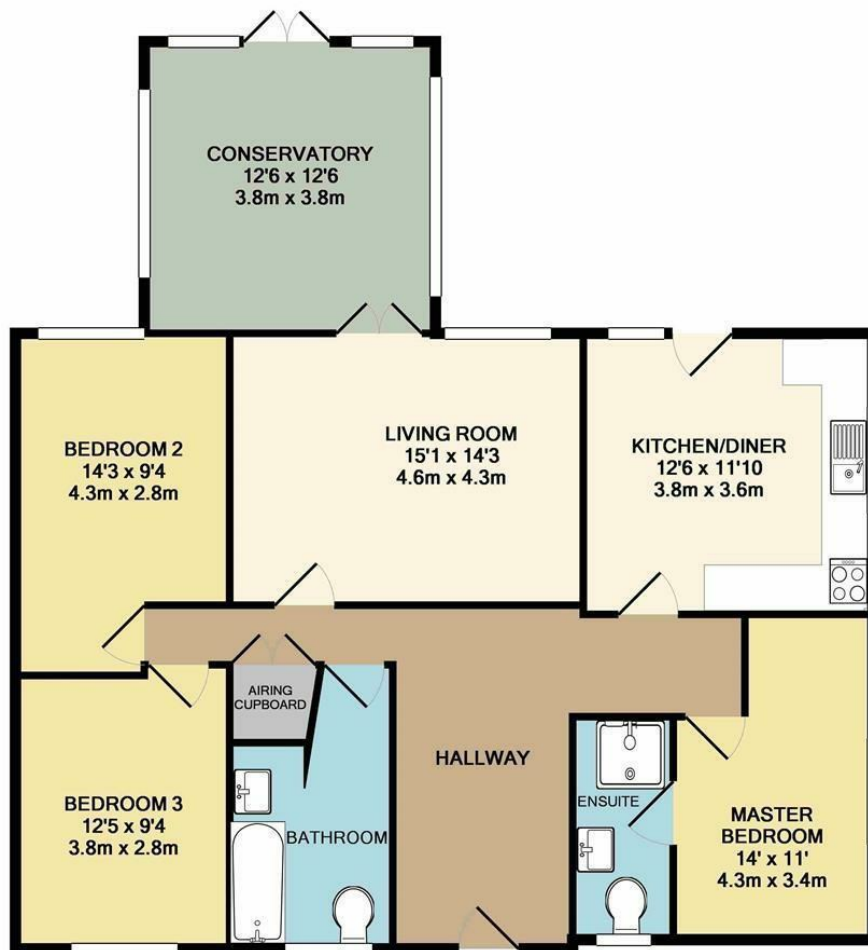
Rent - £1,330 PCM Deposit - £1,534

This modern detached bungalow is situated on the edge of Lakenheath village with easy access to both military bases. This property offers excellent accommodation throughout to include, 3 good size bedrooms, kitchen/dining room with some built in appliances, lounge, large conservatory & 2 bathrooms.

- MODERN DETACHED BUNGALOW
- 3 GOOD SIZE BEDROOMS
- CONSERVATORY
- FAMILY BATHROOM & ENSUITE
- ENCLOSED GARDEN, GARAGE & PARKING
- CLOSE TO BOTH RAF BASES
- OIL HEATING & ENERGY RATING - D
- APPROXIMATE SIZE - 1128 SQ FT.
- COUNCIL TAX BAND - C
- AVAILABLE AT THE END OF AUGUST



Council Tax Band: C - EPC Rating: D 68



TOTAL APPROX. FLOOR AREA 1128 SQ.FT. (104.8 SQ.M.)

Whilst every attempt has been made to ensure the accuracy of the floor plan contained here, measurements of doors, windows, rooms and any other items are approximate and no responsibility is taken for any error, omission, or mis-statement. This plan is for illustrative purposes only and should be used as such by any prospective purchaser. The services, systems and appliances shown have not been tested and no guarantee as to their operability or efficiency can be given
 Made with Metropix ©2018

