



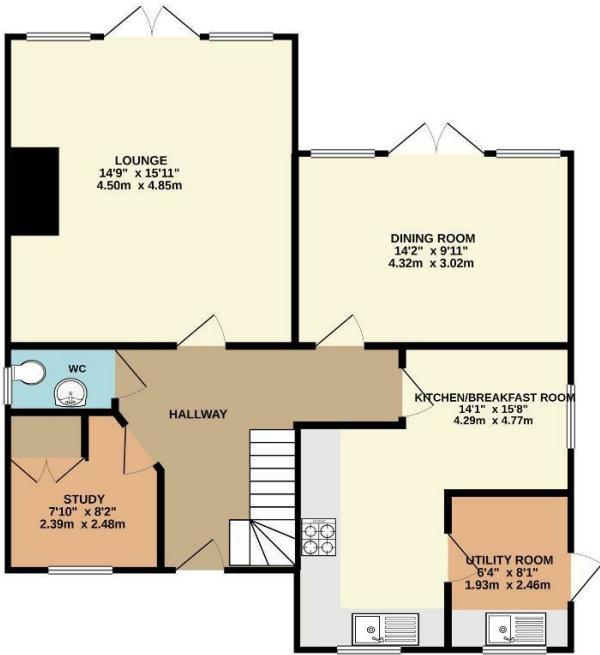
Paddock Street, Soham, Cambridgeshire, CB7 5JA
Rent - £1,750 PCM Deposit - £2,019

This four bedroom family home boasts spacious living throughout, included but not limited to a large living room, separate dining room, kitchen with breakfast area and a separate laundry room. Study and 4 double bedrooms, 2 with en-suites and a further family bathroom and cloakroom. Double garage, ample parking and fully enclosed rear garden. Book now to view to avoid disappointment.

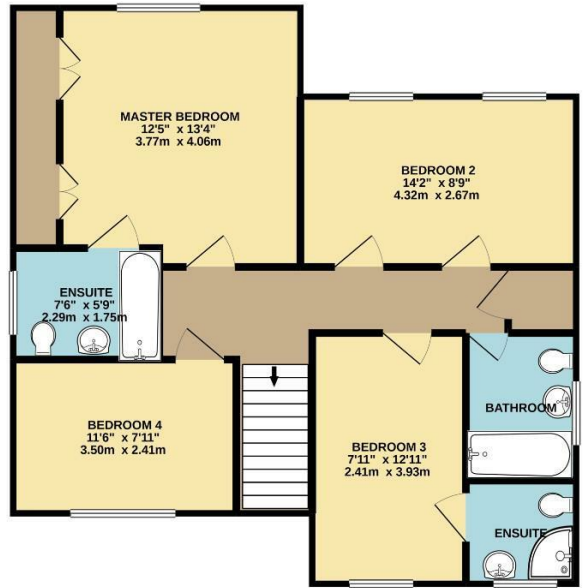
- SPACIOUS DETACHED FAMILY HOME
- 4 GOOD SIZE BEDROOMS
- UTILITY ROOM & STUDY
- FAMILY BATHROOM, CLOAKROOM & 2 EN SUITES
- DOUBLE GARAGE, PARKING & ENCLOSED GARDEN
- MODERN KITCHEN WITH SOME BUILT IN APPLIANCES
- GAS HEATING & ENERGY RATING - C
- APPROXIMATE SIZE - 1504 SQ FT.
- SORRY NO PETS
- AVAILABLE NOW



GROUND FLOOR
767 sq. ft. (71.3 sq. m.) approx.



1ST FLOOR
737 sq. ft. (68.5 sq. m.) approx.



TOTAL FLOOR AREA: 1504 sq. ft. (139.8 sq. m.) approx.

Whilst every attempt has been made to ensure the accuracy of the floorplan contained here, measurements of doors, windows, rooms and any other items are approximate and no responsibility is taken for any error, omission or mis-statement. This plan is for illustrative purposes only and should be used as such by any prospective purchaser. The services, systems and appliances shown have not been tested and no guarantee as to their operability or efficiency can be given.
Made with Metropix ©2020

