



Birch Walk, Beck Row, Suffolk, IP28 8UG

Rent - £1,600 PCM Deposit - £1,846

Welcome to Birch Walk, Beck Row - a stunning 2002 built detached house located in a peaceful cul-de-sac. This property boasts ample space with 2 reception rooms, 4 bedrooms, and 2 bathrooms including a family bathroom, cloakroom, and an en suite for added convenience.

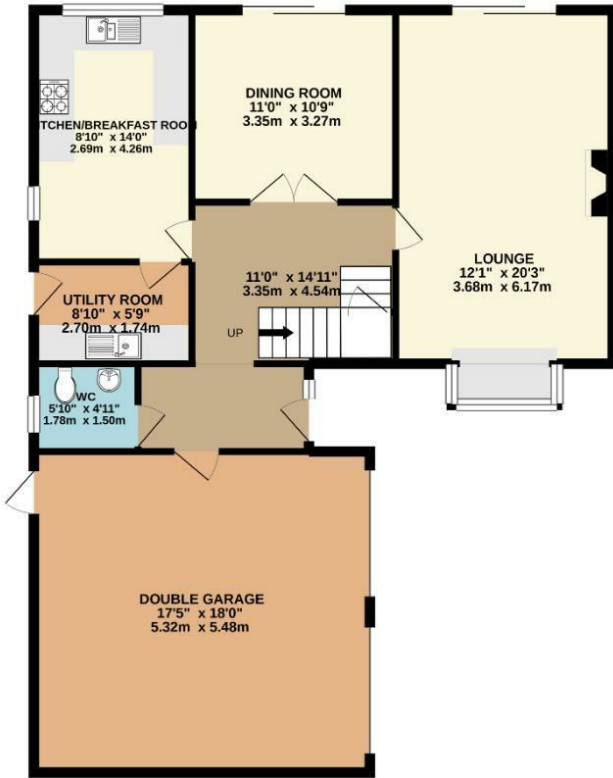
With a generous 1,709 sq ft of living space, this property offers the perfect blend of comfort and style. The double garage and parking area provide parking for up to 5 vehicles, making it ideal for families or those who enjoy

- DETACHED FAMILY HOME
- 4 BEDROOMS
- LOUNGE & SEPARATE DINING ROOM
- FAMILY BATHROOM
- FITTED KITCHEN & UTILITY ROOM
- CLOSE TO RAF BASES
- OIL HEATING & ENERGY RATING - D
- APPROXIMATE SIZE - 1709 SQ FT
- ENSUITE & CLOAKROOM
- AVAILABLE NOW

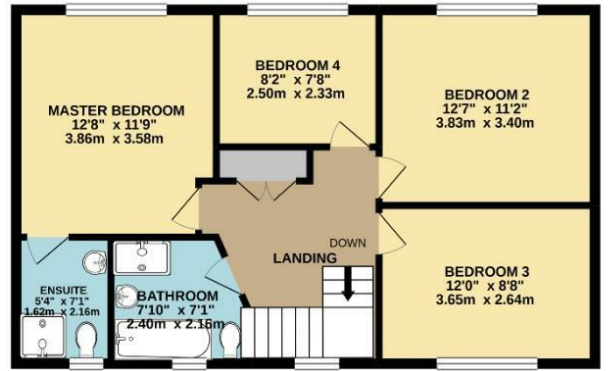


Council Tax Band: D - EPC Rating: D 66

GROUND FLOOR
1066 sq.ft. (99.1 sq.m.) approx.



1ST FLOOR
643 sq.ft. (59.7 sq.m.) approx.



TOTAL FLOOR AREA : 1709 sq.ft. (158.8 sq.m.) approx.

Whilst every attempt has been made to ensure the accuracy of the floorplan contained here, measurements of doors, windows, rooms and any other items are approximate and no responsibility is taken for any error, omission or mis-statement. This plan is for illustrative purposes only and should be used as such by any prospective purchaser. The services, systems and appliances shown have not been tested and no guarantee as to their operability or efficiency can be given.
Made with Metropix ©2020

