



The Street, Barton Mills, Suffolk, IP28 6AA
Rent - £1,200 PCM Deposit - £1,384

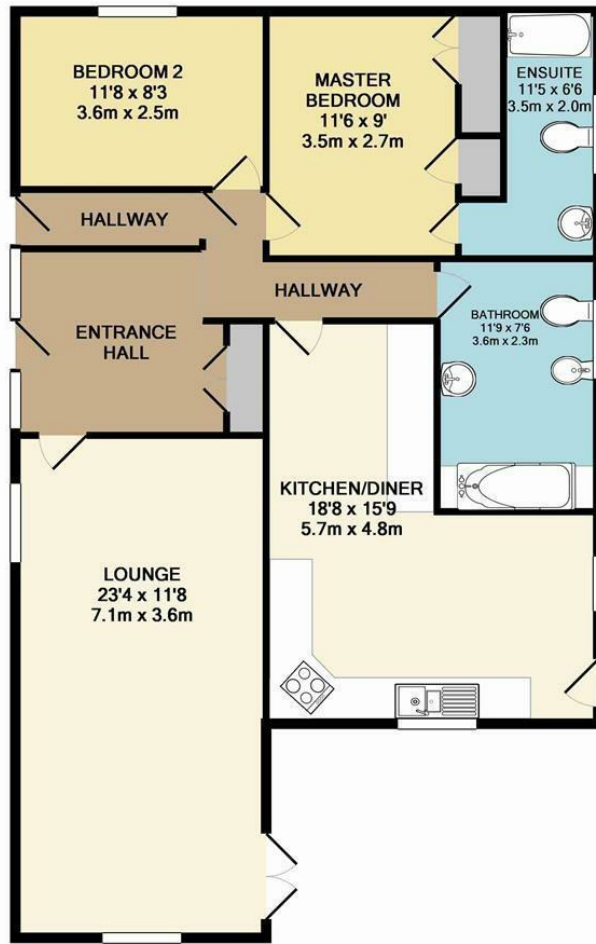
Welcome to this charming bungalow located on The Street in Barton Mills. This delightful property boasts a large reception room, spacious kitchen-diner, 2 bedrooms and 2 bathrooms, making it the perfect size for a small family, couple or those looking for a cosy retreat.

Situated in a village location, the large garden provides ample space for outdoor activities, gardening, or simply enjoying the fresh air.

- DETACHED BUNGALOW
- 2 GOOD SIZE ROOMS
- OFTEN REQUESTED VILLAGE LOCATION
- FAMILY BATHROOM & ENSUITE
- GARAGE, ENCLOSED REAR GARDEN & 4 X PARKING SPACES
- CLOSE TO RAF BASES
- GAS HEATING & ENERGY RATING - B
- APPROXIMATE SIZE - 1011 SQ FT
- COUNCIL TAX BAND - D
- AVAILABLE IMMEDIATELY



Council Tax Band: D - EPC Rating: null



TOTAL APPROX. FLOOR AREA 1011 SQ.FT. (93.9 SQ.M.)

Whilst every attempt has been made to ensure the accuracy of the floor plan contained here, measurements of doors, windows, rooms and any other items are approximate and no responsibility is taken for any error, omission, or mis-statement. This plan is for illustrative purposes only and should be used as such by any prospective purchaser. The services, systems and appliances shown have not been tested and no guarantee as to their operability or efficiency can be given
Made with Metropix ©2015

