



New Farm Cotts, West Toft, Norfolk, IP26 5EA

Rent - £1,100 PCM Deposit - £1,269

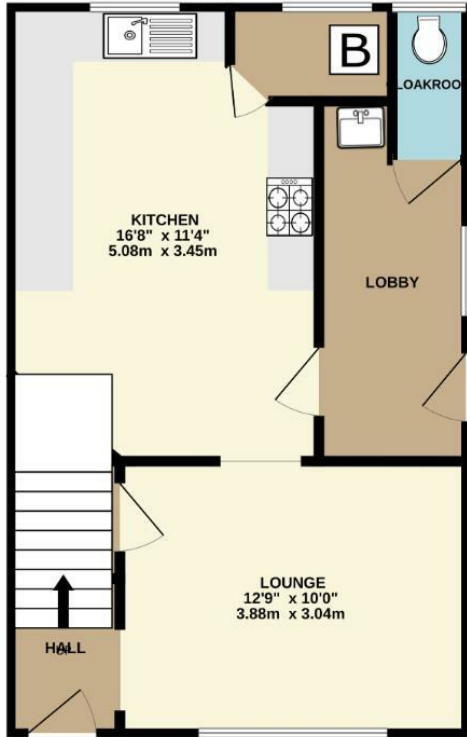
This modern semi-detached property is located in an often requested village location, close to RAF Lakenheath. The property has been updated throughout and benefits from 3 bedrooms, lounge & a brand new kitchen & bathroom. Outside there is a large garden, off road parking & a garage.

- SEMI DETACHED HOUSE
- 3 BEDROOMS
- MODERN KITCHEN
- FAMILY BATHROOM & CLOAKROOM
- LARGE GARDEN, OFF ROAD PARKING & GARAGE
- RURAL LOCATION
- OIL HEATING & ENERGY RATING - D
- APPROXIMATE SIZE - 861 SQ FT
- SORRY NO PETS / COUNCIL TAX BAND - B
- AVAILABLE NOW

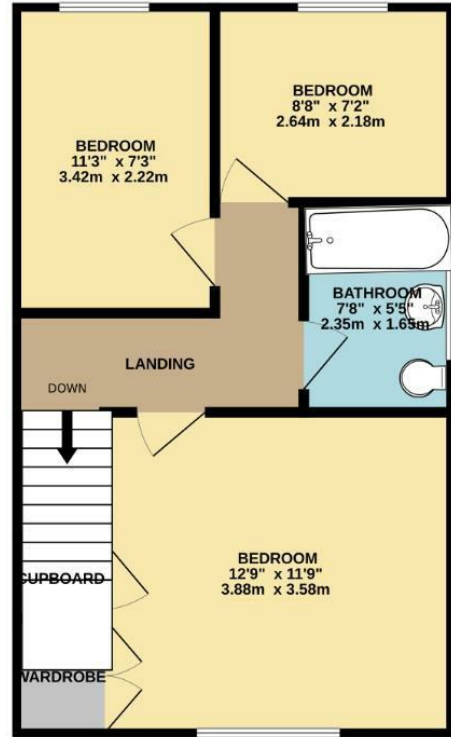


Council Tax Band: B - EPC Rating: D 59

GROUND FLOOR
445 sq.ft. (41.3 sq.m.) approx.



1ST FLOOR
425 sq.ft. (39.4 sq.m.) approx.



TOTAL FLOOR AREA : 869 sq.ft. (80.8 sq.m.) approx.

Whilst every attempt has been made to ensure the accuracy of the floorplan contained here, measurements of doors, windows, rooms and any other items are approximate and no responsibility is taken for any error, omission or mis-statement. This plan is for illustrative purposes only and should be used as such by any prospective purchaser. The services, systems and appliances shown have not been tested and no guarantee as to their operability or efficiency can be given.
Made with Metropix ©2023

